

# Grain Grading Mat

*Not for use in official inspections*



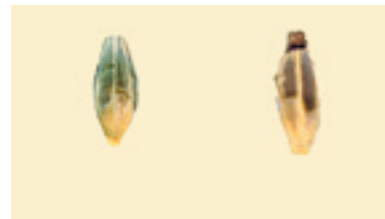
Blight Damage



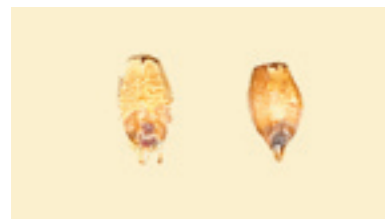
Mold Damage



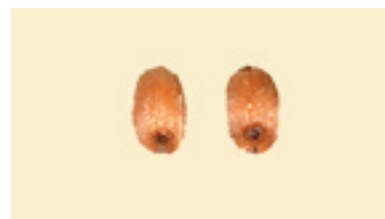
Injured By Frost



Frost Damage



Germ Damage



Injured By Heat

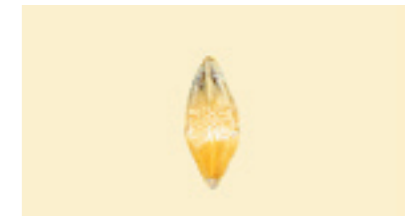
Barley Grade Requirements  GRADE	MINIMUM LIMITS OF--		MAXIMUM LIMITS OF--				
	Test Weight per bushel (pounds)	Sound Barley (percent)	Damaged Kernels (percent)	Heat-Damaged Kernels (percent)	Foreign Material (percent)	Broken Kernels (percent)	Thin Barley (percent)
<b>U.S. No. 1</b>	<b>47.0</b>	<b>97.0</b>	<b>2.0</b>	<b>0.2</b>	<b>1.0</b>	<b>4.0</b>	<b>10.0</b>
<b>U.S. No. 2</b>	<b>45.0</b>	<b>94.0</b>	<b>4.0</b>	<b>0.3</b>	<b>2.0</b>	<b>8.0</b>	<b>15.0</b>
<b>U.S. No. 3</b>	<b>43.0</b>	<b>90.0</b>	<b>6.0</b>	<b>0.5</b>	<b>3.0</b>	<b>12.0</b>	<b>25.0</b>
<b>U.S. No. 4</b>	<b>40.0</b>	<b>85.0</b>	<b>8.0</b>	<b>1.0</b>	<b>4.0</b>	<b>18.0</b>	<b>35.0</b>
<b>U.S. No. 5</b>	<b>36.0</b>	<b>75.0</b>	<b>10.0</b>	<b>3.0</b>	<b>5.0</b>	<b>28.0</b>	<b>75.0</b>



Heat Damage



Insect Bored



Injured By Mold



Sprout Damage



Skinned / Broken



Two-Row / Six-Row

GIPSA Picking Surface: Formica "Wheat" matte finish (#7891-58). Contact Formica Specialty Products (800) 800-6787.