

Grain Grading Mat

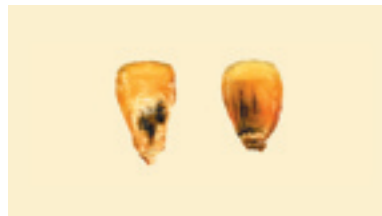
Not for use in official inspections



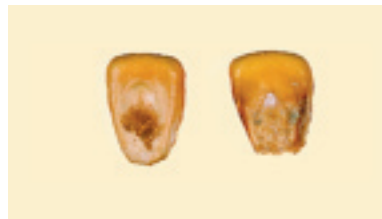
Blue Eye Mold Damage



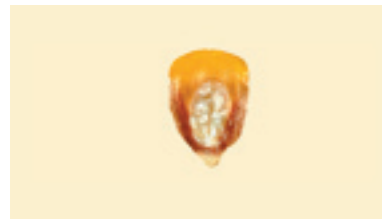
Purple Plumule (not damage)



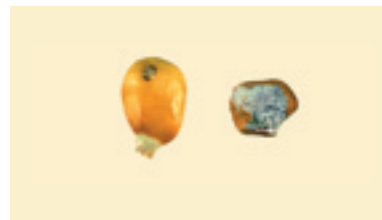
Surface Mold (blight)



Cob Rot Damage



Surface Mold Damage

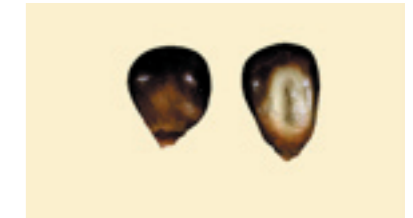


Mold Damage

Corn Grade Requirements	Grade	Minimum Test Weight Per Bushel (pounds)	Maximum limits of—		
			Damaged kernels		Broken Corn and Foreign Material (percent)
			Heat (part of total) (percent)	Total (percent)	
U.S. No. 1		56.0	0.1	3.0	2.0
U.S. No. 2		54.0	0.2	5.0	3.0
U.S. No. 3		52.0	0.5	7.0	4.0
U.S. No. 4		49.0	1.0	10.0	5.0
U.S. No. 5		46.0	3.0	15.0	7.0



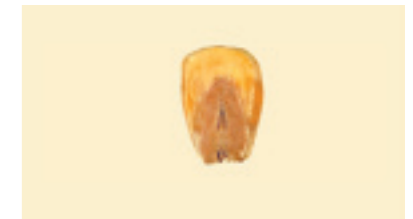
Dirt (not damage)



Heat Damage (drier)



Heat Damage (yellow corn)



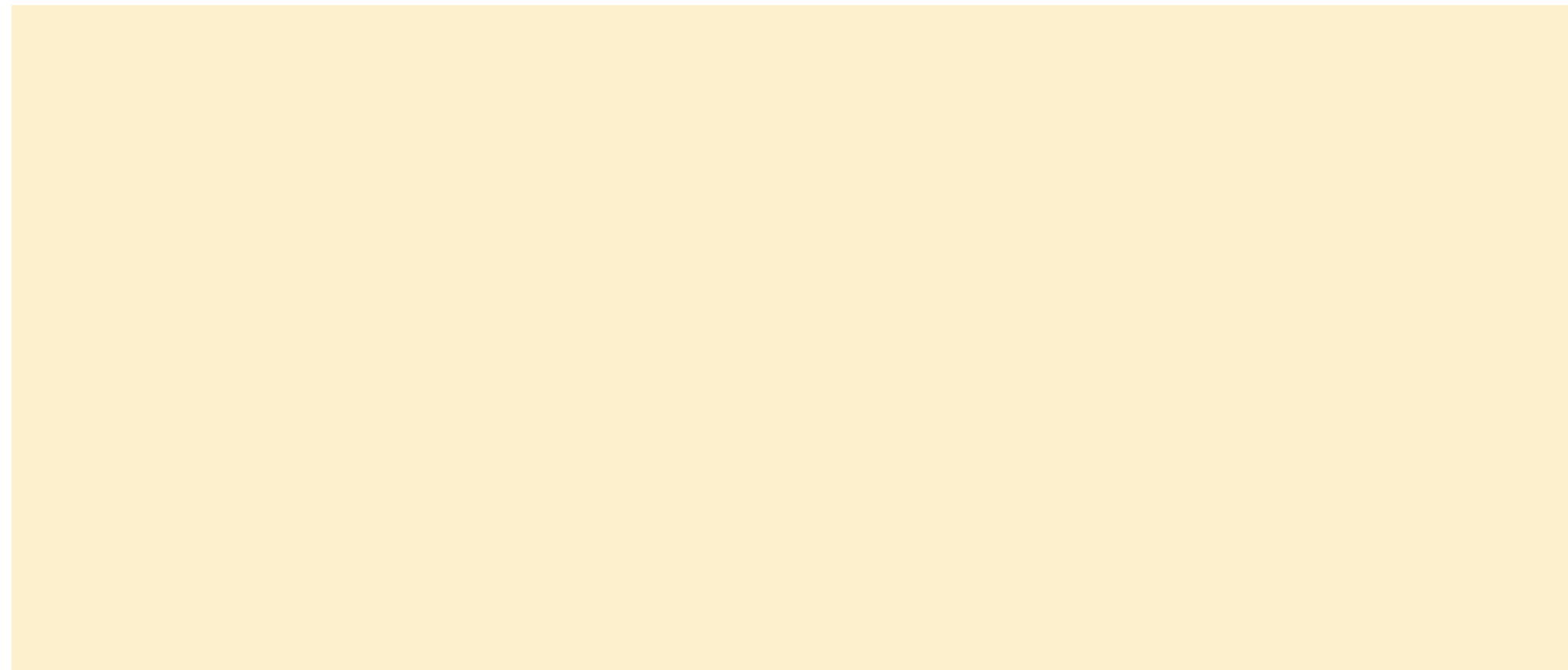
Germ Damage



Sprout Damage



Insect Damage



GIPSA Picking Surface: Formica "Wheat" matte finish (#7891-58). Contact Formica Specialty Products (800) 800-6787.