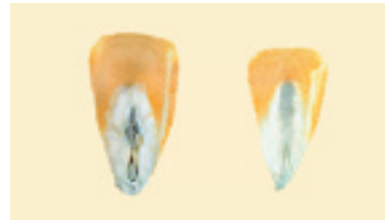
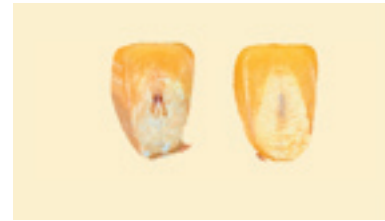


곡물 등급기준 옥수수



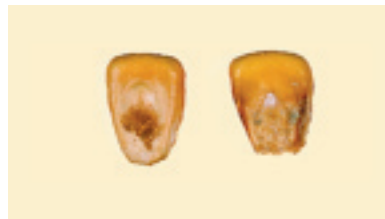
푸른곰팡이 피해립



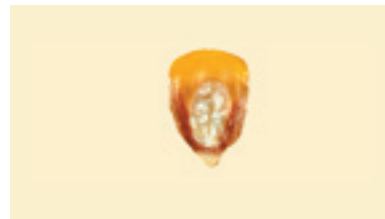
자색돌기립



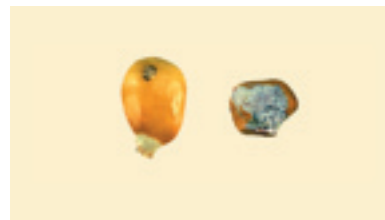
마름병 피해립



부패립

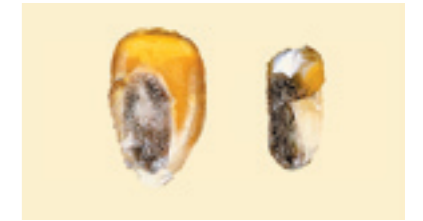


곰팡이 피해립 (표면)

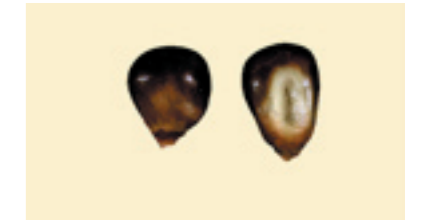


곰팡이 피해립

등급	-- 이상		-- 이하		
	북셀당 중량 (lb)	손상립		파립·이물 (%)	
		열손립 (%)	손상립 (%)		
U.S. No. 1	56.0	0.1	3.0	2.0	
U.S. No. 2	54.0	0.2	5.0	3.0	
U.S. No. 3	52.0	0.5	7.0	4.0	
U.S. No. 4	49.0	1.0	10.0	5.0	
U.S. No. 5	46.0	3.0	15.0	7.0	



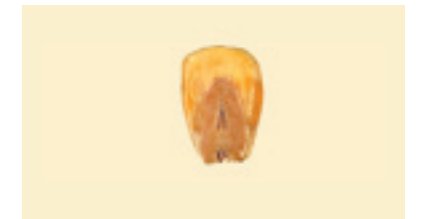
이물



열손립(건조기)



열손립(황색증)



배아 손상립



발아립



충해립