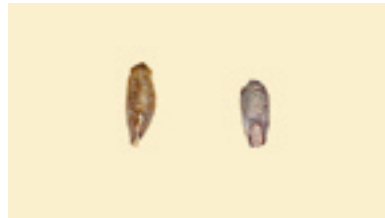


# Grain Grading Mat

*Not for use in official inspections*



Germ Damage



Sprout Damage

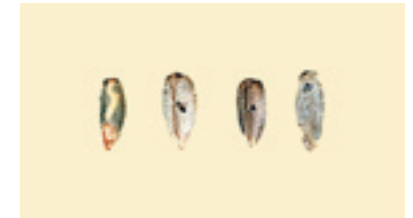


Exposed Germs Not Damage

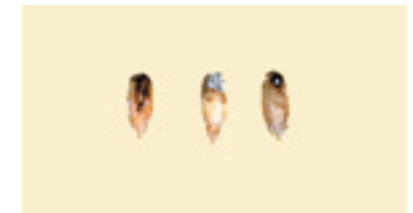
Rye Grade Requirements	MINIMUM Test Weight per bushel (pounds)	MAXIMUM LIMITS OF--				
		Foreign Material		Damaged Kernels		Thin Rye (percent)
		Foreign Matter Other than Wheat (percent)	Total (percent)	Heat-Damaged (percent)	Total (percent)	
GRADE						
<b>U.S. No. 1</b>	<b>56.0</b>	<b>1.0</b>	<b>3.0</b>	<b>0.2</b>	<b>2.0</b>	<b>10.0</b>
<b>U.S. No. 2</b>	<b>54.0</b>	<b>2.0</b>	<b>6.0</b>	<b>0.2</b>	<b>4.0</b>	<b>15.0</b>
<b>U.S. No. 3</b>	<b>52.0</b>	<b>4.0</b>	<b>10.0</b>	<b>4.0</b>	<b>7.0</b>	<b>25.0</b>
<b>U.S. No. 4</b>	<b>49.0</b>	<b>6.0</b>	<b>10.0</b>	<b>3.0</b>	<b>15.0</b>	<b>--</b>



A. Insect Chewed (not damaged)  
 B. Sprout Socket Damage



Insect Damage



Other Damage

GIPSA Picking Surface: Formica "Wheat" matte finish (#7891-58). Contact Formica Specialty Products (800) 800-6787.