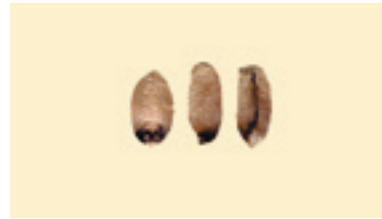
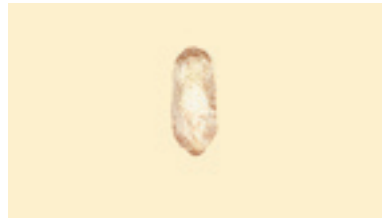


Grain Grading Mat

Not for use in official inspections



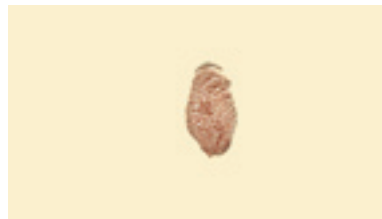
Black Tip Fungus



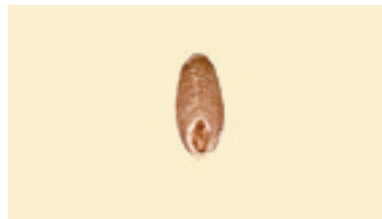
Scab Damage



Frost Damage (blistered)



Frost (flaked)



Germ Damage



Mold Damage

Wheat Grade Requirements Grade	Minimum limits of—		Maximum limits of—						
	Test Weight Per Bushel		Damaged kernels		Foreign Material (percent)	Shrunken and Broken Kernels (percent)	Defects (percent)	Wheat of Other Class	
	Hard Red Spring wheat or White Club wheat (pounds)	All Other Classes and Subclasses (pounds)	Heat (part of total) (percent)	Total (percent)				Contrasting Classes (percent)	Total (percent)
U.S. No. 1	58.0	60.0	0.2	2.0	0.4	3.0	3.0	1.0	3.0
U.S. No. 2	57.0	58.0	0.2	4.0	0.7	5.0	5.0	2.0	5.0
U.S. No. 3	55.0	56.0	0.5	7.0	1.3	8.0	8.0	3.0	10.0
U.S. No. 4	53.0	54.0	1.0	10.0	3.0	12.0	12.0	10.0	10.0
U.S. No. 5	50.0	51.0	3.0	15.0	5.0	20.0	20.0	10.0	10.0



Heat Damage Other Than Durum



Heat Damage (Durum)



Sprout Damage



Insect Chewed (not damage)
Sprout Socket (damage)



Insect Bored



Green Immature

GIPSA Picking Surface: Formica "Wheat" matte finish (#7891-58). Contact Formica Specialty Products (800) 800-6787.