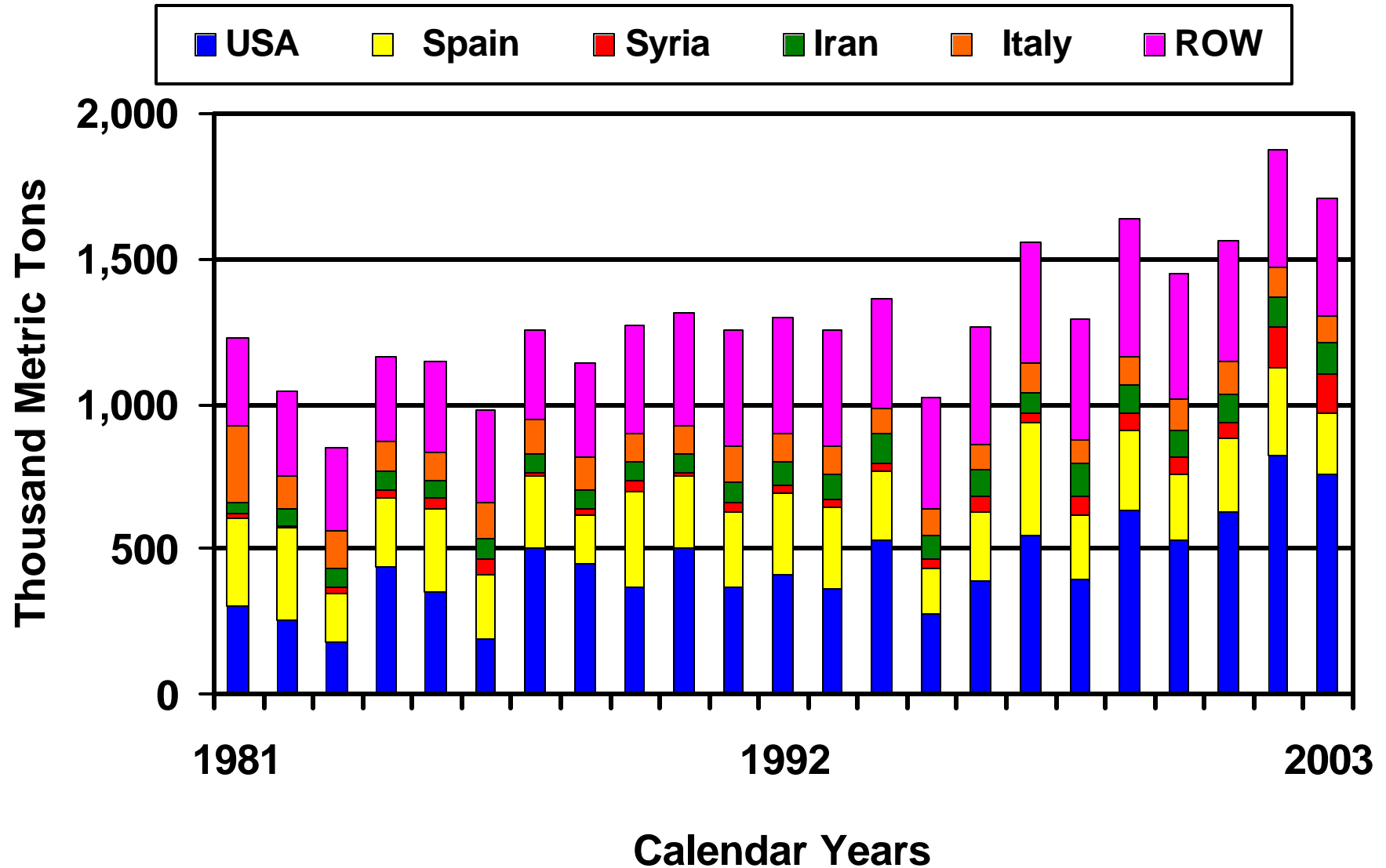


The U.S. and World Situation: Almonds

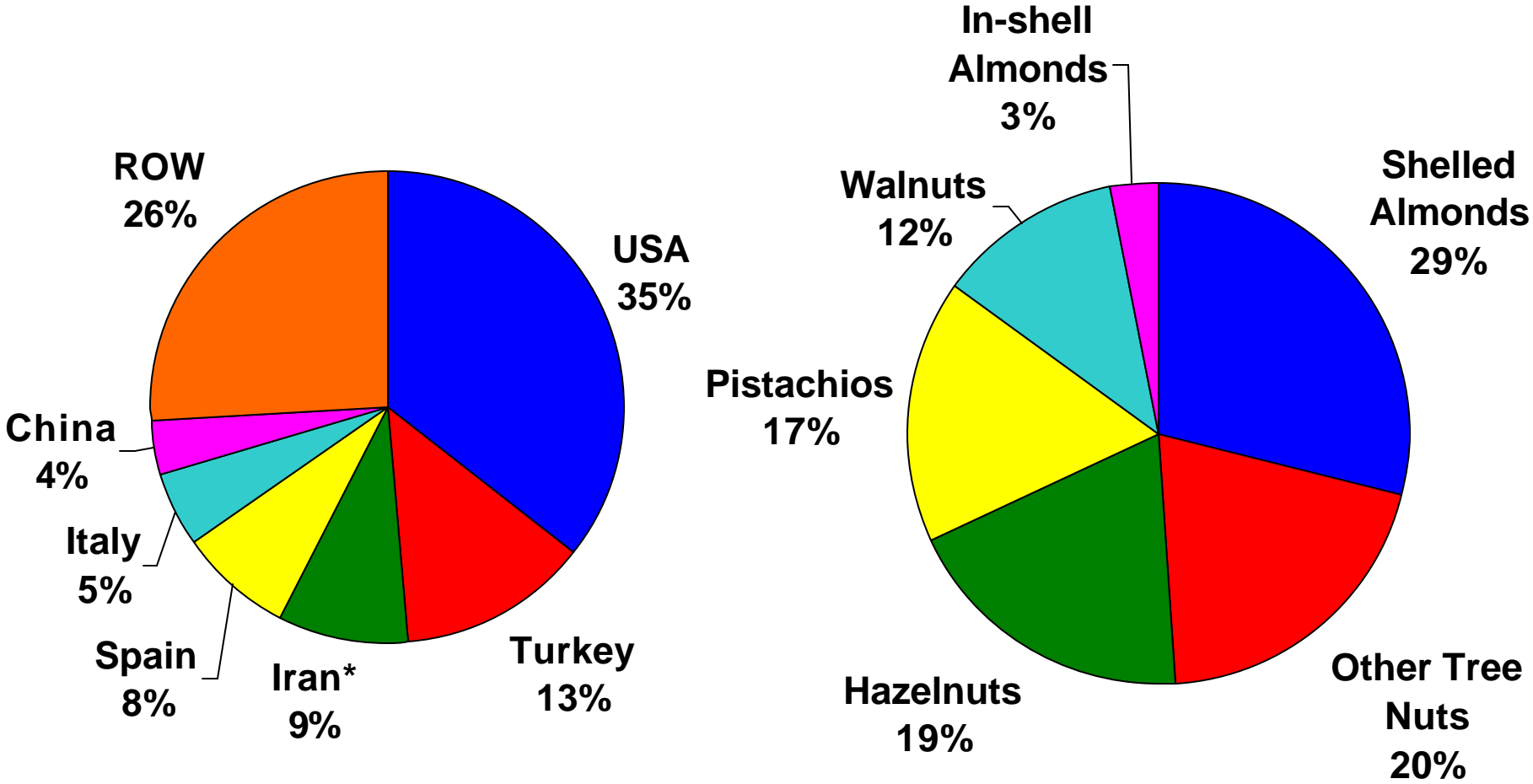
**USDA
Foreign Agricultural Service
Horticultural & Tropical Products Division
April 2004**

Global Almond Production



Source: Food and Agriculture Organization (FAO) of the United Nations

CY 2002 Global Tree Nut Exports Totalled \$3.2 Billion

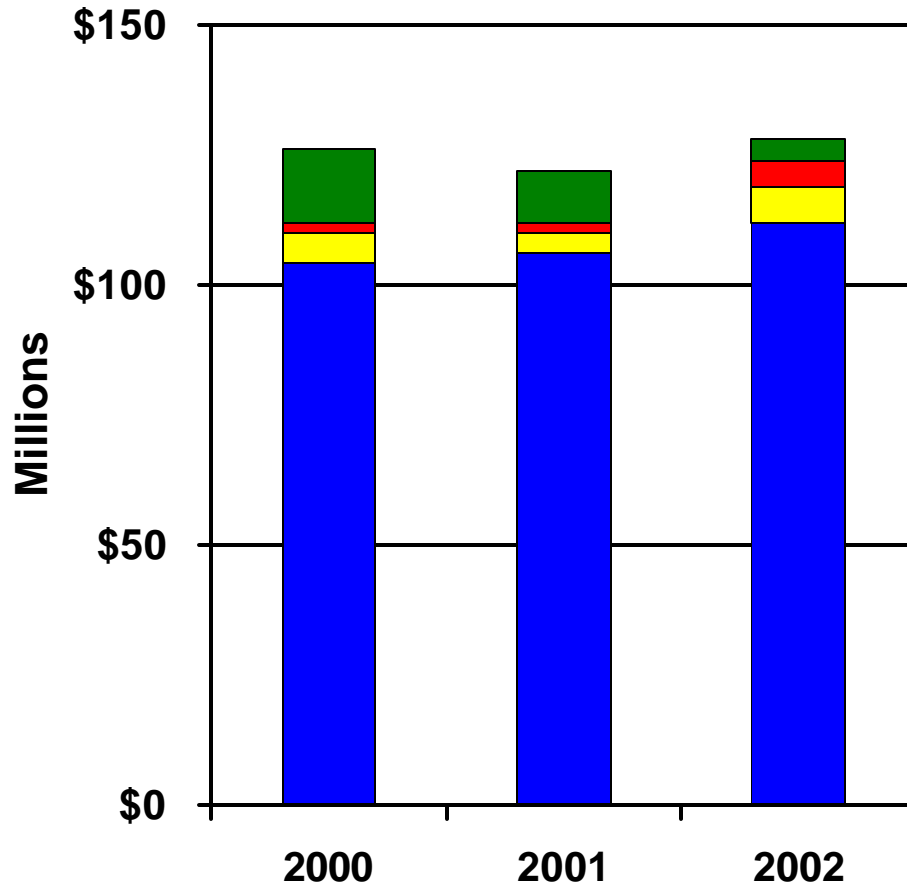


Source: Global Trade Atlas

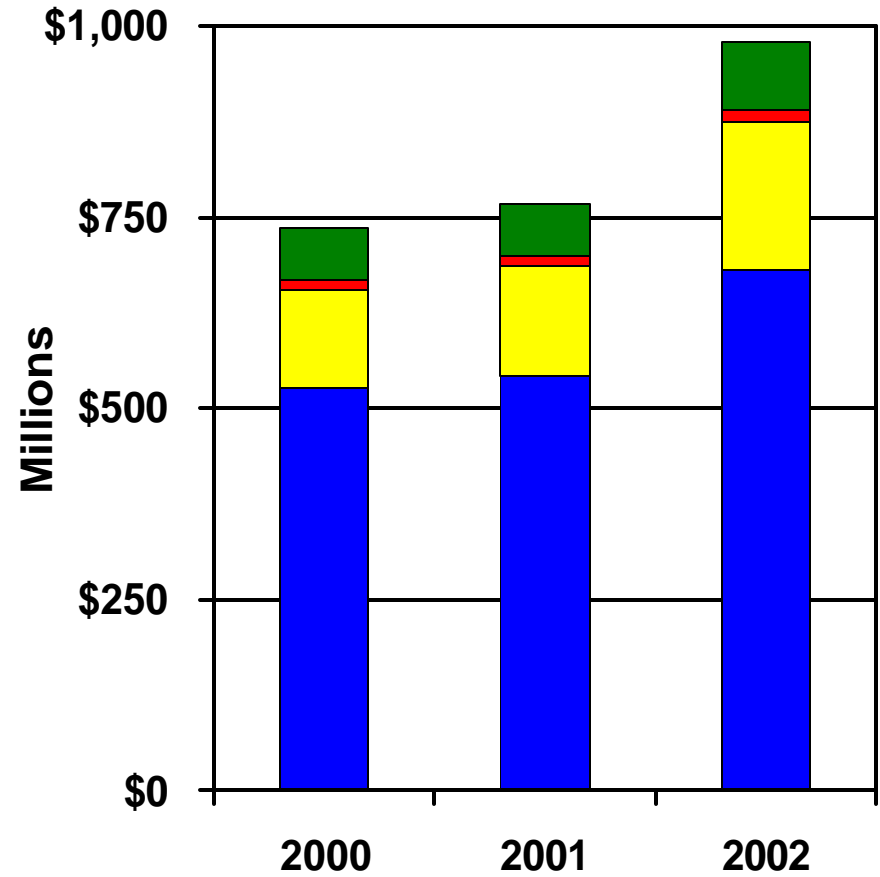
* Derived from reported imports

Top Exporters of Almonds

In-shell Almonds



Shelled Almonds



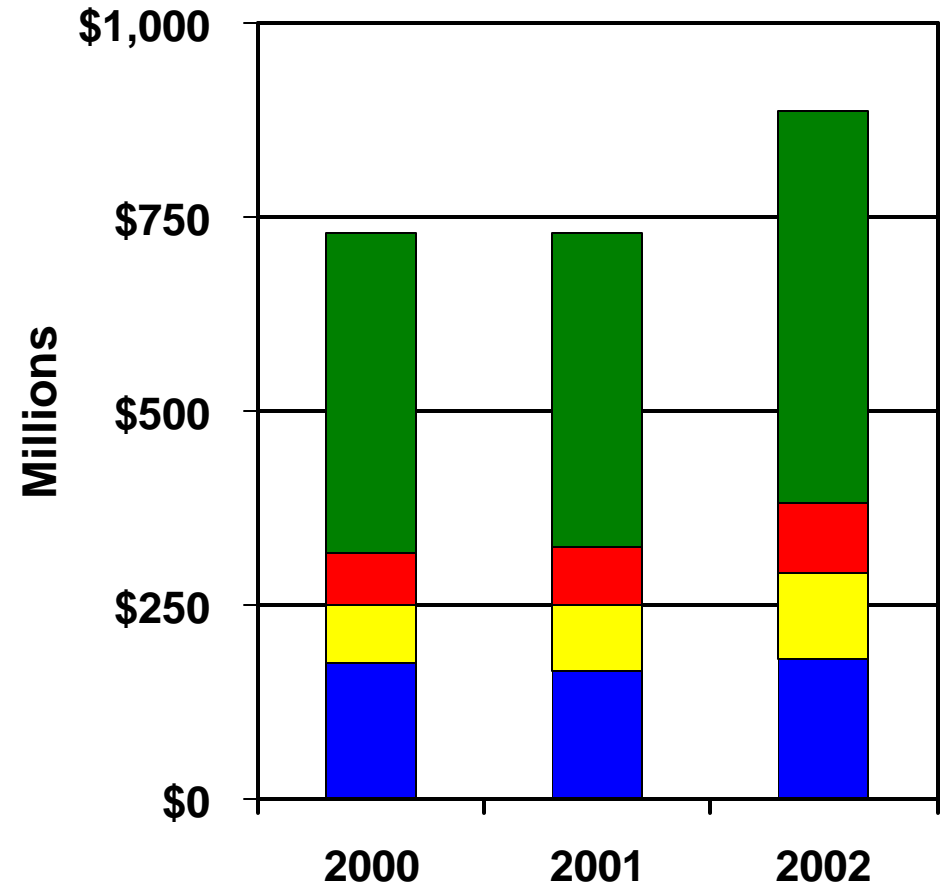
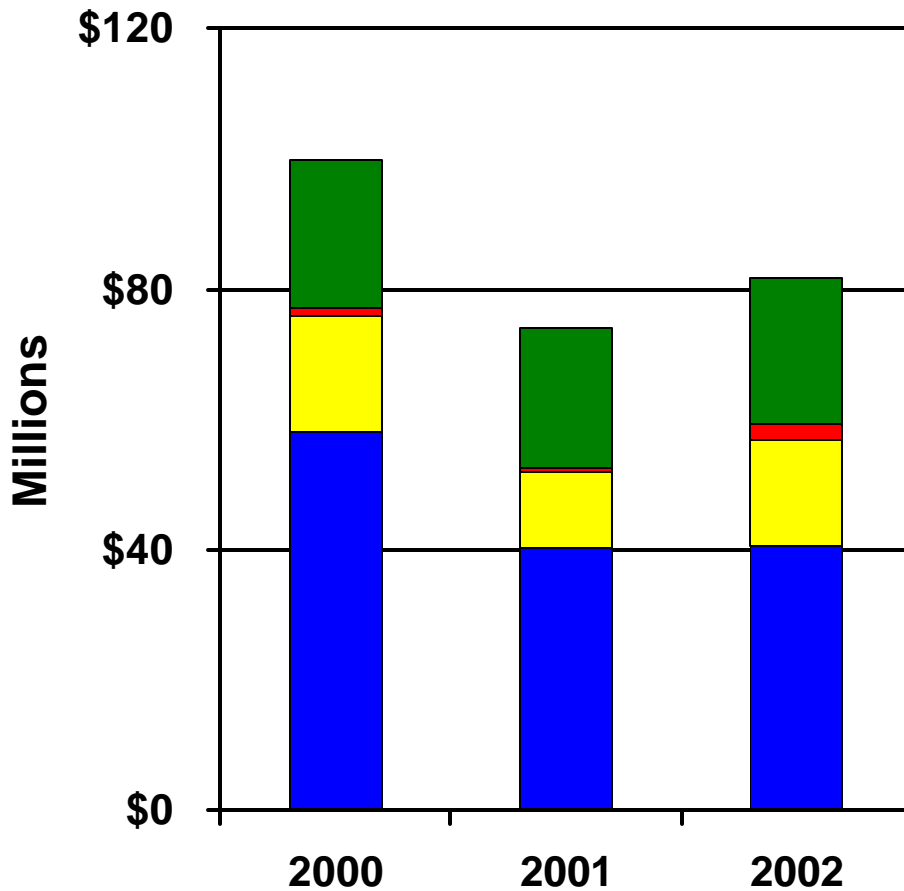
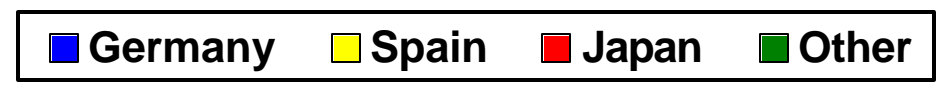
Source: Global Trade Atlas

Calendar Years

Top Importers of Almonds

In-shell Almonds

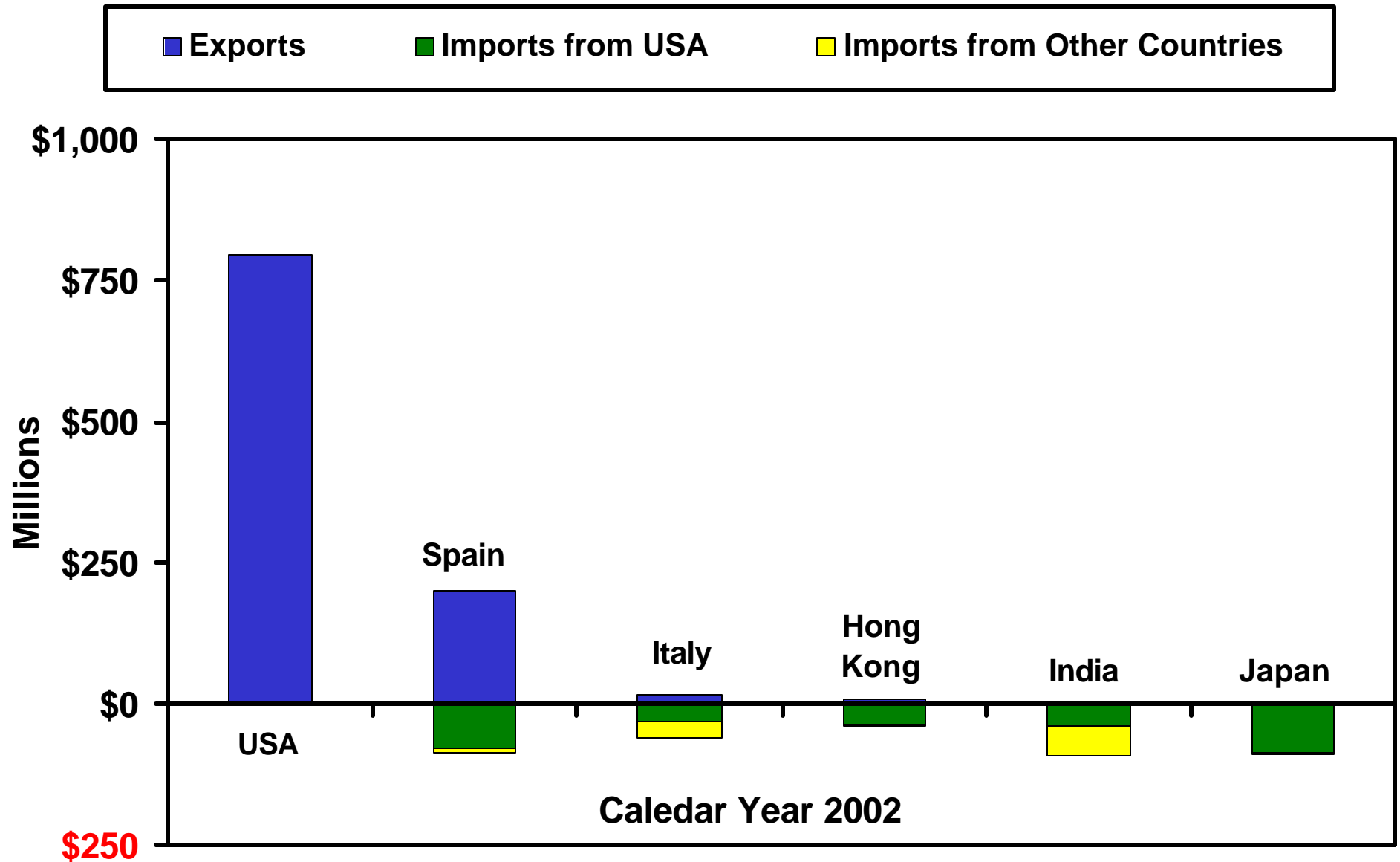
Shelled Almonds



Source: Global Trade Atlas

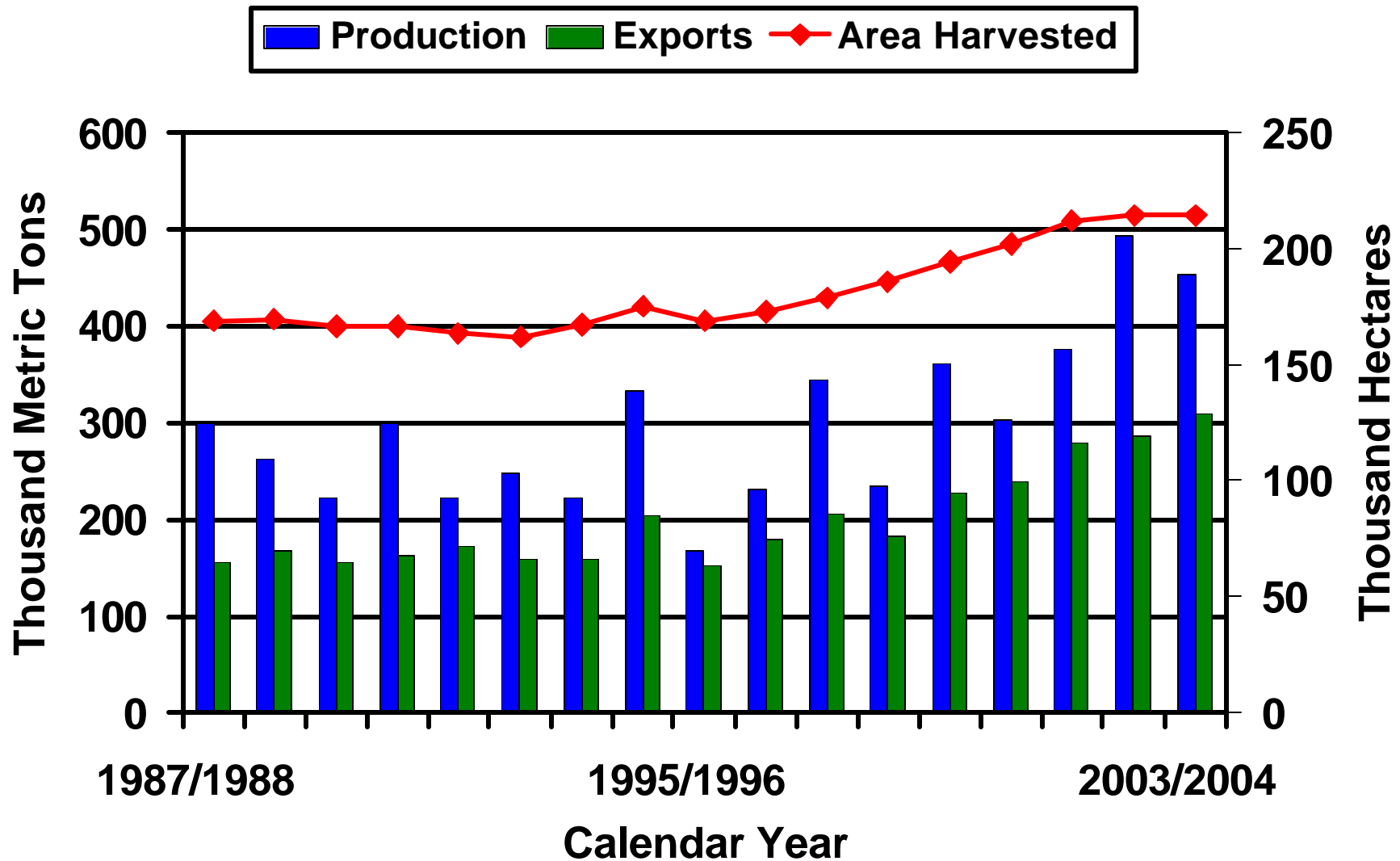
Calendar Years

Key Almond Traders



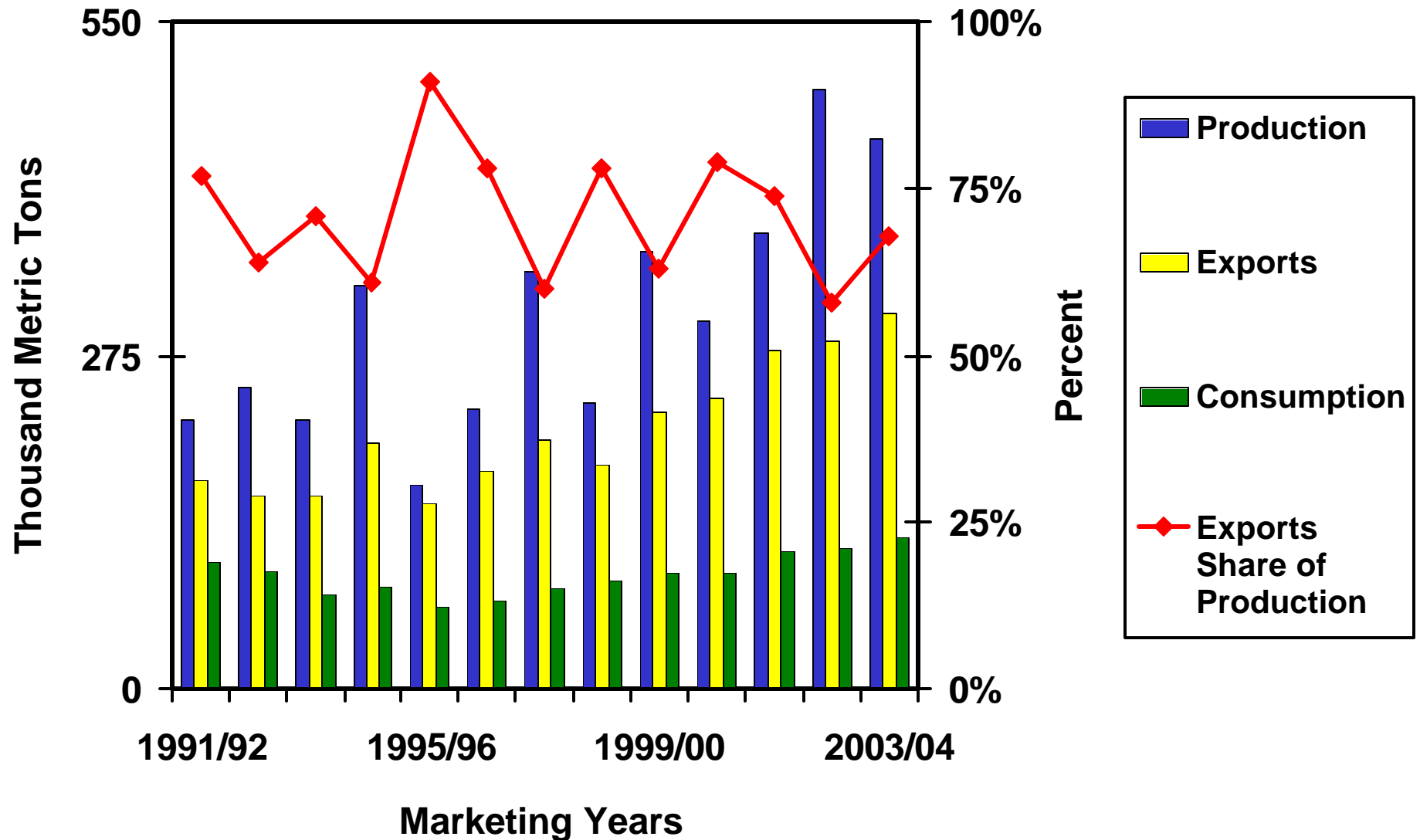
Source: Global Trade Atlas. Includes shelled and in-shell almonds.

U.S. Almond Plantings and Production



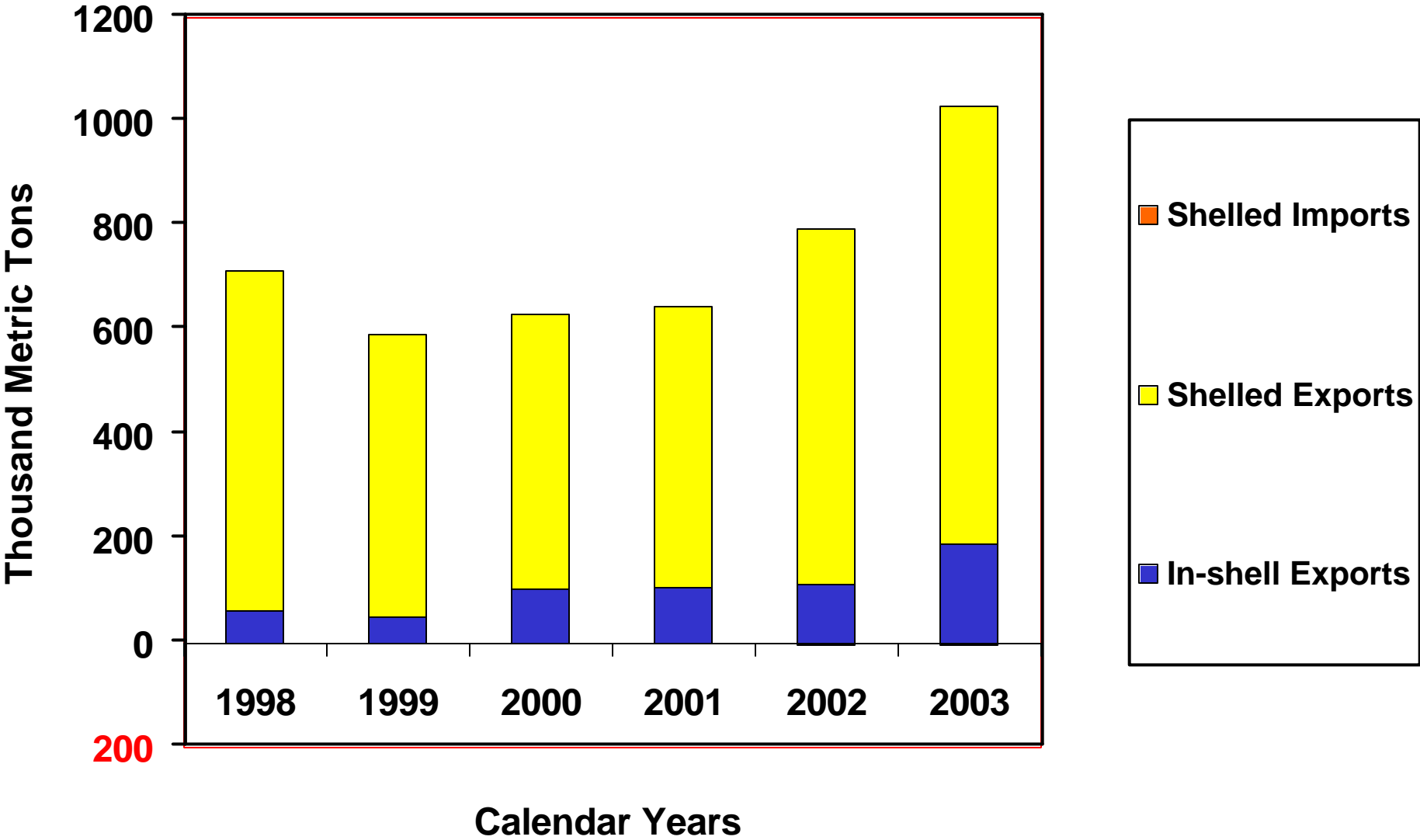
Source: National Agricultural Statistics Service, USDA; Economic Research Service, USDA

U.S. Almond Production, Consumption, and Exports



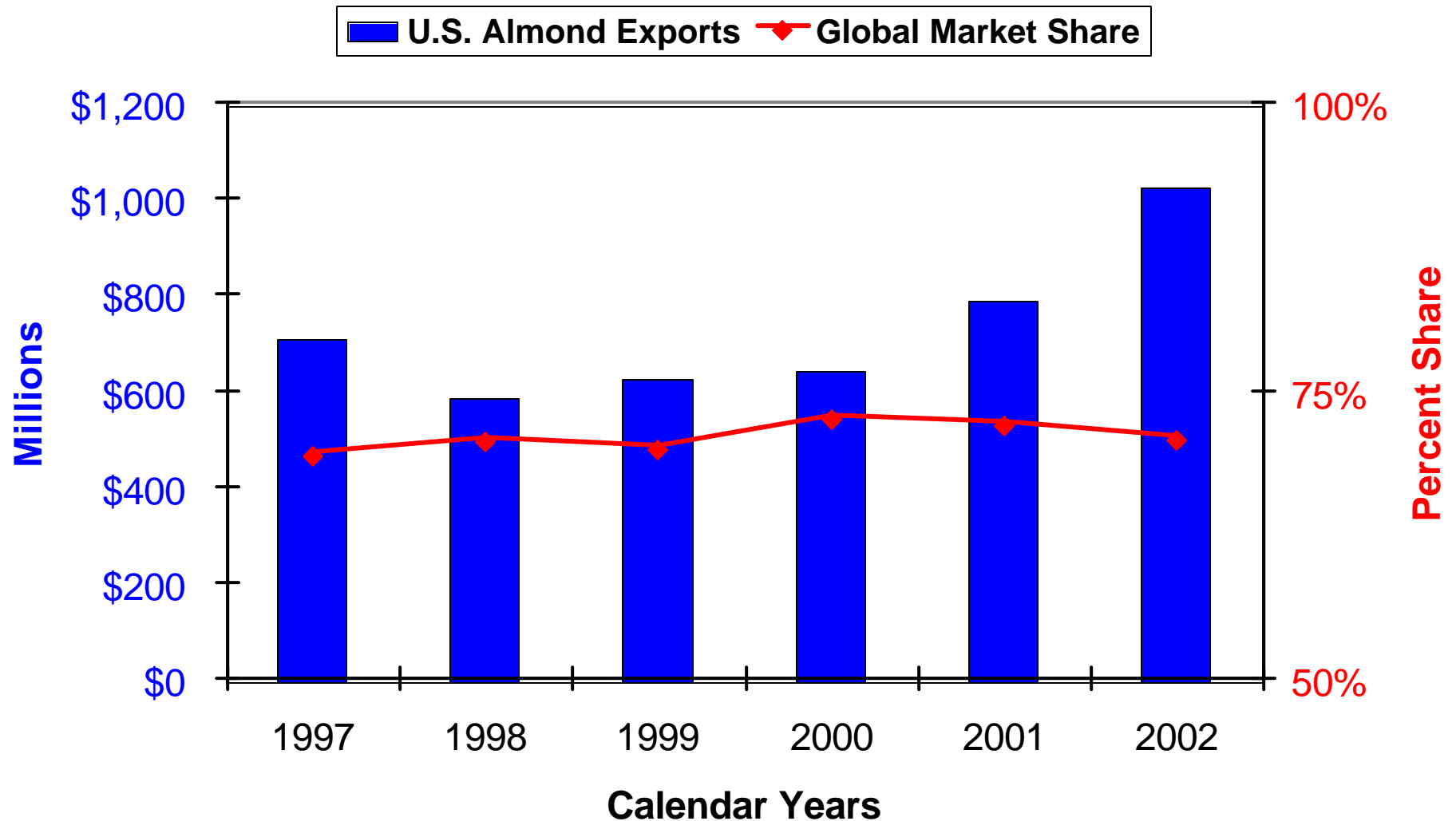
Source: Economic Research Service, USDA. Imports are negligible.

U.S. Almond Trade Balance



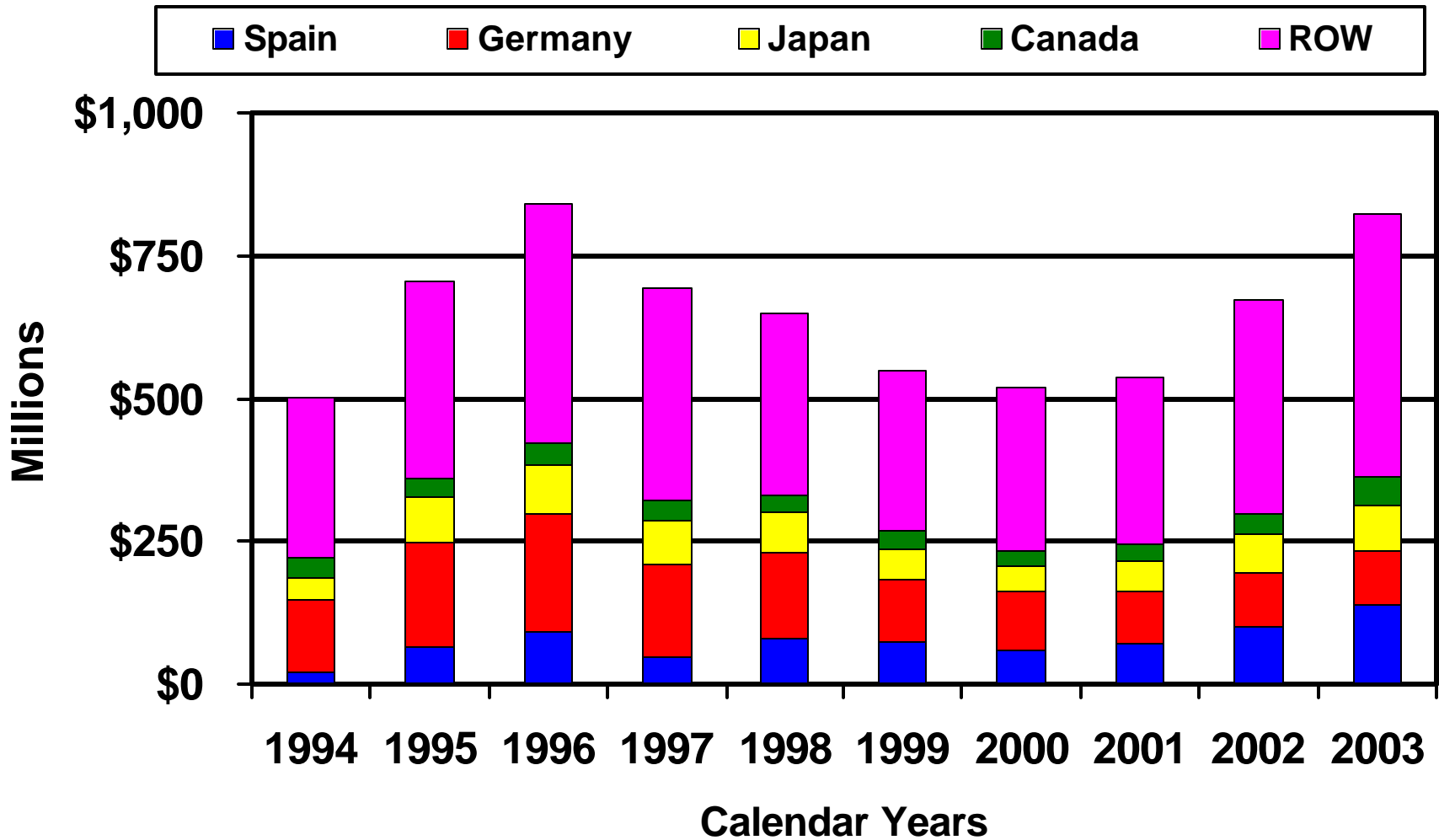
Source: Global Trade Atlas. Note: In-shell almond imports are negligible.

U.S. Almond Exports and Global Market Share



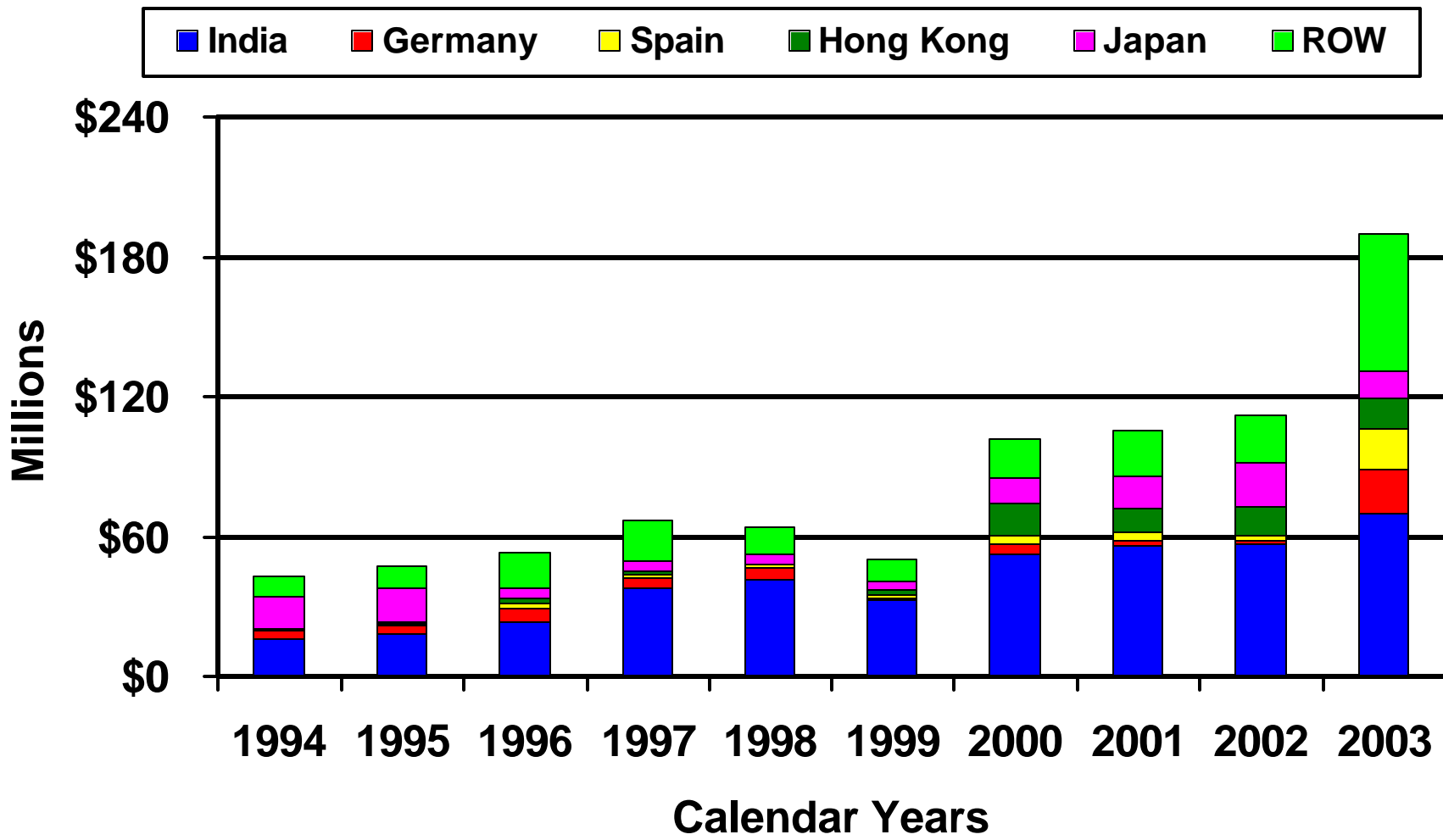
Source: Global Trade Atlas

Top U.S. Shelled Almond Export Markets



Source: Bureau of the Census, DOC

Top U.S. In-shell Almond Export Markets



Source: Bureau of the Census, DOC

2004 Applied Tariff Rates Selected Countries and Selected Commodities

Commodity HS # (s)	Almonds ns 080211	Almonds sh 080212	Pistachios 080250	Walnuts 08023
Country				
NAFTA				
United States	13.5	4.1	0.24-0.34	6-8.85
Canada	0	0	0	0
Mexico	0	0	0	0
WESTERN HEMISPHERE				
Argentina	11.5	11.5	11.5	11.5
Brazil	10	10	10	10
Chile	0	0	0	0
Venezuela	15	15	15	15
EUROPE				
European Union	5.6	3.5	1.6	5.1
MIDDLE EAST				
Israel	OQ NS8.10/kg BNM91.8+17%VAT	OQ NS14.40/kg BNM91.8%+17%VAT	0 + 17% VAT	0+17% VAT
Kuwait	5	5	5	5
Saudi Arabia	5.0	5.0	5.0	5.0
Turkey	43.2	43.2	43.2	43.2
AFRICA				
Egypt	30	30	30	30
South Africa	0	0	0	0
ASIA				
China	24 + 13 VAT	10 + 13 VAT	10 + 13 VAT	20-25 + 13 VAT
Hong Kong	0	0	0	0
India	Rs 35/kg	Rs 65/kg	30	30
Indonesia	5 + 10 VAT	5 + 10 VAT	5 + 10 VAT	5 + 10 VAT
Japan	free - 2.4 1/	free - 2.4 1/	0	10
Korea, Republic of	8	8	30	45 in-shell; 30 shelled
Australia	5	5	free	free
Malaysia	0	0	0	0
New Zealand	0	0	0	0
Philippines	3	3	3	3
Singapore	0	0	0	0
Taiwan	5	2.5	3	5
Thailand	10 CIF value or 8.50B/kg 2/	10 CIF value or 8.50B/kg 2/	10 CIF value or 8.50B/kg 2/	10 CIF value or 8.50B/kg 2/

The information contained in these tables is drawn from a variety of sources and is intended for illustrative purposes. Accuracy of the individual entries is not guaranteed.

Note 1: IQ means In-Quota Tariff. OQ means Out-Of-Quota Tariff. VAT means Value Added Tax. EXT means Excise Tax.

Note 2: Sole numbers (without further description or details) means or refer to the applied tariff in percent.

Note 3: Shaded areas represent import tariffs higher than the United States.

1/ plus entry price: 298 EUR/ton

2/ B = Baht, which is the Thai currency.