



# Color Management with Mac OS X Panther

A Technology Tour  
June 2004

# Contents

<b>Page 3</b>	<b>Making Color Work for You</b>
<b>Page 4</b>	<b>The ColorSync Foundation</b> Making an Inventory of Your Profiles Obtaining and Assigning Color Profiles
<b>Page 9</b>	<b>Color Workflow: The Capture Phase</b> Capturing Images Managing Untagged Images Converting to a Working Space
<b>Page 14</b>	<b>Color Workflow: The Edit Phase</b> Calibrating and Profiling Your Display Editing Images Soft Proofing Sharing Soft Proofs Creating Hard-Copy Proofs
<b>Page 19</b>	<b>Color Workflow: The Output Phase</b> Checking Color Before You Print Faster Printing on a PostScript Printer Printing to a Raster Printer PDF/X Support
<b>Page 22</b>	<b>Automating the Workflow</b> About AppleScript An Automation Starter Kit Running Scripts
<b>Page 24</b>	<b>Resources</b> Websites Profiling Services Books

# Making Color Work for You



## **ColorSync: End-to-end color management**

Apple makes it easier to ensure that the color you see onscreen consistently matches the color in your final printed materials.

Apple ColorSync technology, based on the International Color Consortium (ICC) standard that Apple helped define, translates color accurately from one device to another across your workflow. When combined with other ICC-compatible hardware and software products and powerful color-aware Apple computers and displays, ColorSync provides an end-to-end color management solution.

As a creative professional, color is at the heart of your work. Accurate color that matches expectations makes a dramatic difference in reducing production costs and timetables, and in helping you generate more engaging visual products for clients.

With Mac OS X v10.3 “Panther,” Apple has removed another barrier to your creativity by taking the color management capabilities of the Macintosh to an entirely new level. With Panther, it is faster, easier, and more affordable than ever to achieve consistent color.

Here’s how the advanced color management capabilities in Panther help you focus on being as creative as possible:

- Panther takes a systemwide approach to color by integrating always-on International Color Consortium (ICC) color management into every phase of the workflow: capture, edit, and output. This feature ensures that the color you capture is the same color you see onscreen and in print.
- Image Capture, an image acquisition application and framework built into Panther, automatically embeds a profile into each image downloaded from a digital camera or captured with a scanner, saving you time and streamlining your workflow. This process can be further automated using AppleScript.
- With built-in soft proofing in Panther, you never have to waste another sheet of paper or ounce of ink, and you can achieve faster turnaround times from concept to final approval.
- Printing in Panther provides advanced previewing and output controls, enhancing color accuracy and reducing the number of steps in your PDF workflow.

This Technology Tour will help you understand color management in Mac OS X Panther. It will take you from “what” to “how”—providing step-by-step examples that let you put the advanced color management capabilities of Panther into practice in your day-to-day work.

Combined with the exceptional processing of a Power Mac G5 and a bright, sharp, ColorSync-aware Apple LCD display, Panther makes color management more integrated, more automatic, and easier than ever. It’s just one more way that Apple removes the technology barriers to creativity, so you can focus on bringing your best ideas to light.

# The ColorSync Foundation

Every device, from scanners to displays to printers, has unique color capabilities. Successful color management involves translating color accurately from one device to another across your workflow.

Good color management starts with a color profile—a description of your device's color characteristics. You need two pieces of information: the color characteristics of the source of your image (its input or source profile) and how the image will be reproduced (its output or destination profile).

## Choosing a default CMM

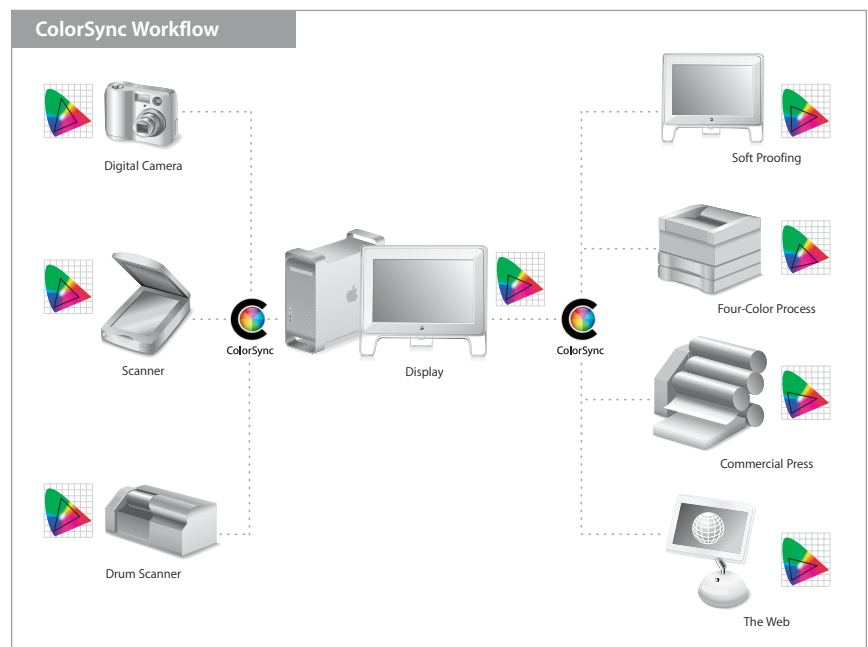
The Preferences pane of ColorSync Utility lets you specify the CMM, or color calculation engine, that ColorSync uses to match colors. Apple recommends changing this setting to Apple CMM to ensure consistent results throughout the workflow.

ColorSync, Apple's implementation of the ICC color standard, uses your color profiles and a color management module (CMM) to match color from input to final output, adjusting for the color characteristics and any limitations of each device in the workflow.

You can use default color profiles for your devices, generated at the factory. Mac OS X Panther automatically assigns these to your devices when you plug them in. Or you or a consultant can create custom color profiles tailored to your specific devices.

Once you have color profiles for the devices in your workflow, simply install them in `/Library/ColorSync/Profiles` on your Macintosh so that the profiles can be read and used by all of the applications in your digital workflow. (For more information on storing profiles, see the sidebar on page 5.)

With good profiles and consistent devices, you can produce excellent color, consistently.





Open ColorSync Utility in /Applications/Utilities. Click the Profiles icon to view installed profiles.

### Where are profiles located?

Because Mac OS X is based on UNIX, and because UNIX is a multiuser operating system, you will see that some profiles are available to individual users; others are available to every user on the computer.

**System profiles** are located in /System/Library/ColorSync/Profiles. They are the basic, preset profiles that your system requires for color management. You cannot delete or modify these profiles, and it's best not to install profiles in this location.

**Computer profiles** are located in /Library/ColorSync/Profiles. This is the recommended place for installing new profiles. Once you've downloaded or obtained new or custom profiles, copy them to /Library/ColorSync/Profiles. These profiles are available to anyone who uses the computer. They can be modified and easily managed using ColorSync Utility.

**User profiles** are located in ~/Library/ColorSync/Profiles. These profiles are available only to the user logged in to the computer.

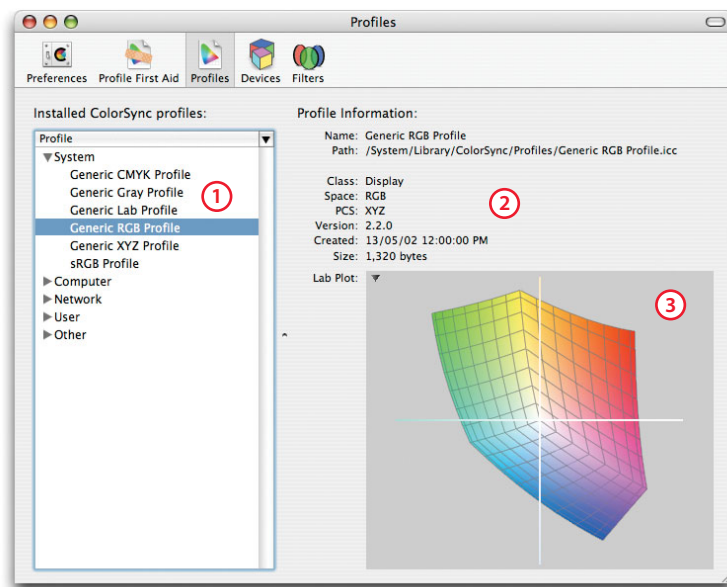
**Other profiles.** Some applications and device drivers install profiles. You shouldn't move or alter these profiles.

## Making an Inventory of Your Profiles

With Mac OS X Panther, you can manage color well—and automatically—using default profiles that Panther assigns. ColorSync Utility provides a central location and an intuitive means of managing all of your generic and custom profiles.

By clicking the Profiles icon, you can see which device profiles are installed on your system and where they are located. You already have a wealth of profiles to help you in your workflow.

If you don't want to use generic color profiles or the default profiles provided by device manufacturers, you can install custom device profiles in /Library/ColorSync/Profiles. Then run the Profile First Aid function in ColorSync Utility. Profile First Aid verifies and repairs the format of ICC profiles installed on your Mac, making sure they conform to the current ICC specification.

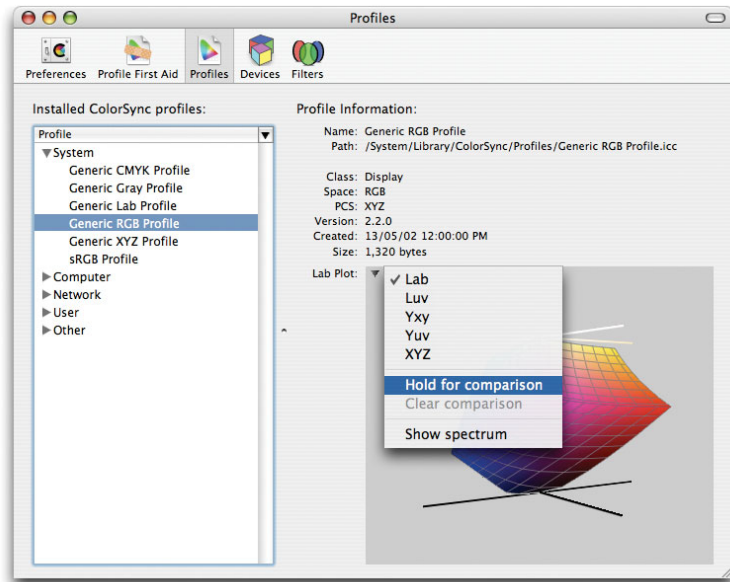


Try clicking a profile (1). You will see summary information about it on the right (2). The three-dimensional graphic (3) represents the profile's *gamut*—a visual representation of the total color volume that a device can reproduce or display.

You can also compare how one gamut matches up with another. For instance, you might want to match your display to your proofer. But first you want to see how the two devices compare in terms of color gamut—where one is more red and the other more blue, for example. Comparing the color gamuts of different devices or color spaces using ColorSync Utility can be quite useful. For example, for editing color, it is best to select a working space with a gamut that overreaches or matches the gamut of the capture (input) device (see page 12, "Converting to a Working Space," for more information). If you do this, the color from the original image will translate into the new space.

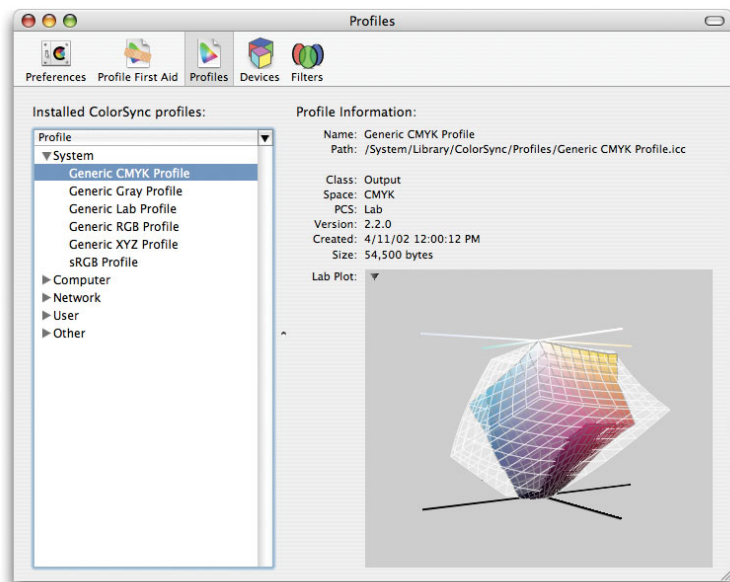
Try comparing the gamuts of an RGB profile and a CMYK profile in ColorSync Utility.

1. Click Generic RGB Profile.
2. Click the triangle next to Lab Plot and select "Hold for comparison."



3. Now click Generic CMYK Profile.

The RGB profile is semitransparent, and you can see how the gamut of one device matches up against the other.



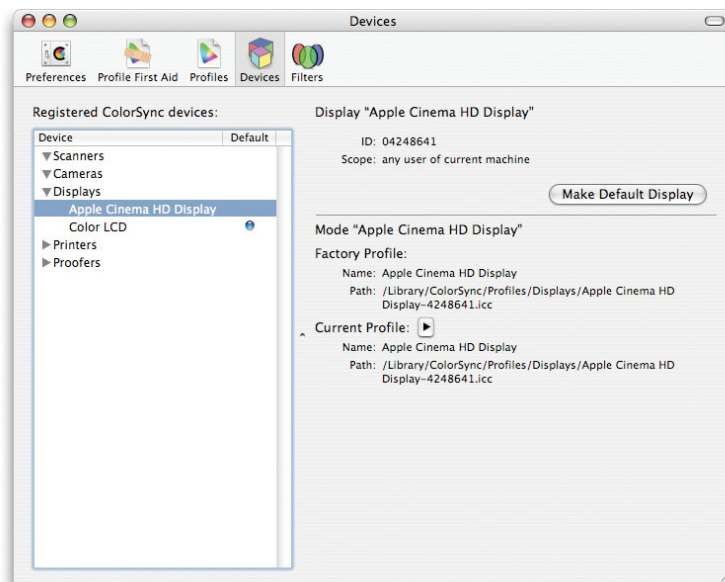
## Obtaining and Assigning Color Profiles

If you need color profiles for your devices, several sources of profiles are available. You can:

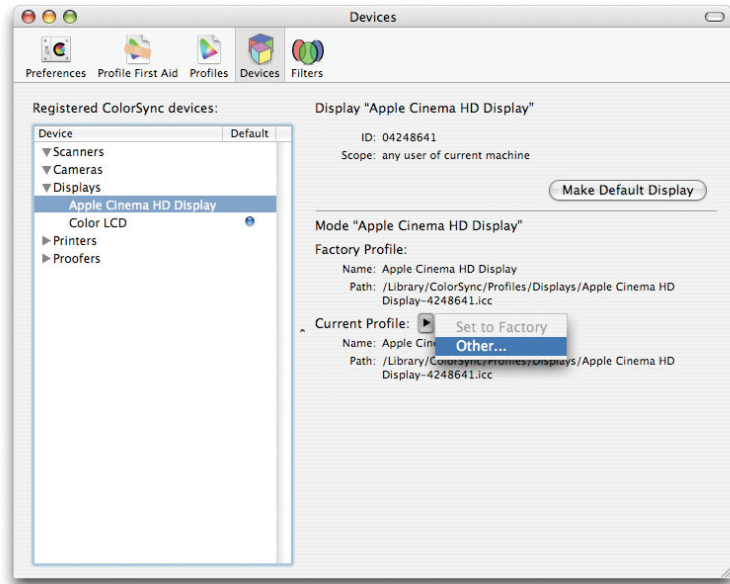
- Download profiles from device providers' websites. Note that these profiles are generic factory profiles, not customized to your particular device.
- If you send your files to a professional printer for output, ask the printer for profiles of their proofer or press. Using these profiles, you can get a clear idea of how your final hard copy will look.
- Hire a consultant or a service to create custom profiles of the devices (scanner, display, printer) in your workflow.
- Invest in the tools to create profiles of your devices yourself. Your investment can range from \$199 to \$5000 and up.
- For more information about obtaining color profiles, see "Resources" on page 24.

If you want to fine-tune your workflow to optimize color accuracy, you will want to use custom color profiles instead of generic or factory profiles. These steps show you how to override a generic profile with a custom device profile.

1. Once you have custom profiles for the devices in your workflow, install them in /Library/ColorSync/Profiles.
2. Open ColorSync Utility.
3. Click the Devices icon. You will see a list of every imaging device connected to your Macintosh.
4. Click the device. The Current Profile is the factory or default profile.



5. To override the factory profile with your custom profile, click the triangle next to Current Profile.
6. Choose Other.



7. Navigate to /Library/ColorSync/Profiles and select the profile you wish to use instead of the factory profile.



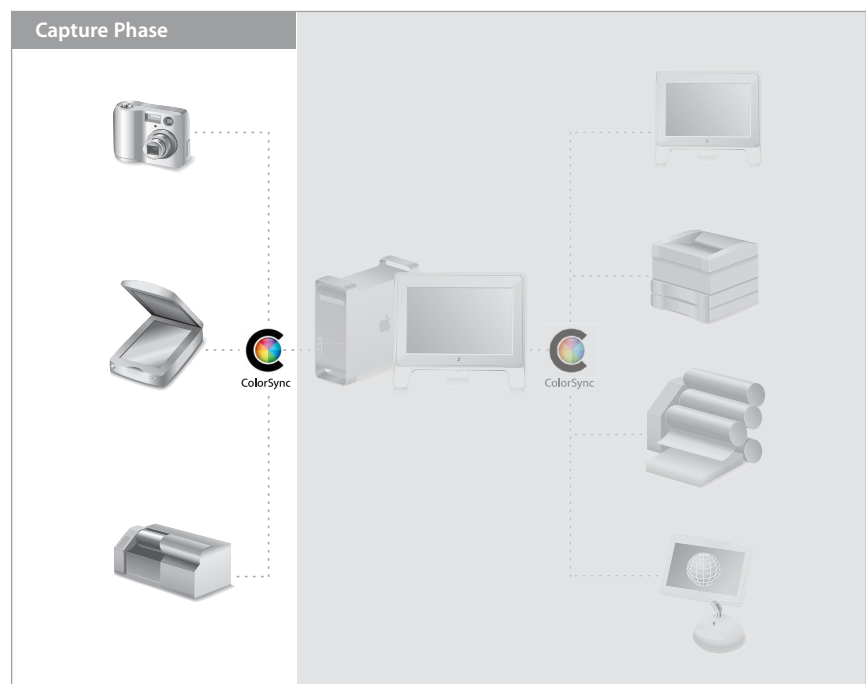
# Color Workflow: The Capture Phase



Image Capture

Once you have created and installed profiles for the various devices in your workflow, you can start capturing images. When you bring images onto your Macintosh, you can greatly improve your ultimate color results with a few simple color management steps:

- Color-manage images as you capture them.
- Convert images to a working space.
- Manage untagged images.



## Capturing Images

When you bring images onto your Mac, you can immediately see the benefits of using Mac OS X v10.3 "Panther." New in Mac OS X is Image Capture, which is both an integrated, systemwide framework and an intuitive application for capturing images. Image Capture can simplify your workflow and save hours on every project.

First, Image Capture is an application (located in /Applications) that, among other things, lets you set your preferences for capturing and tagging images. Images captured with Image Capture are automatically color-managed.

In addition, Image Capture is a comprehensive framework embedded in the operating system that can be used and accessed by any application to manage color. Image Capture also recognizes imaging devices automatically: Plug in your camera or scanner—or any mass storage device, such as an iPod, with a DCIM folder containing images—to your Mac. Image Capture recognizes the device and allows you to start working in a color-aware environment.

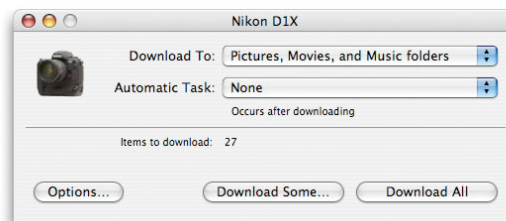
As you download images from your camera or scanner, Image Capture embeds the color profile you've selected (factory or custom) into every image that does not already have an existing profile.

Each image is “tagged” automatically, without any effort on your part. Image Capture then makes the image's color profile information available to your applications and your system, allowing ColorSync to translate color among displays and output devices. Because Image Capture color-manages images for you on the fly, you save hours that were previously spent embedding profiles into each individual image.

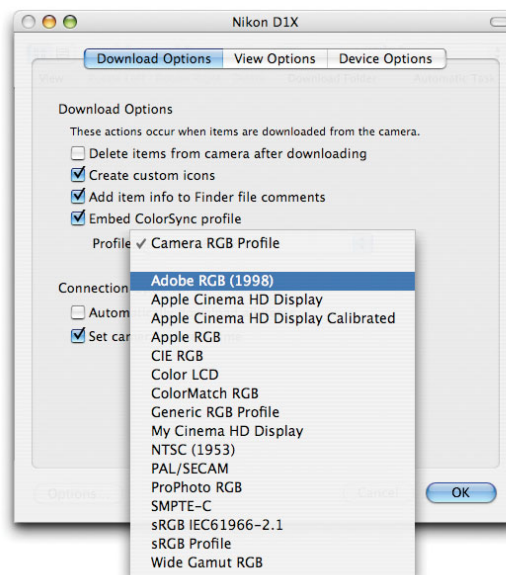
Keep in mind that precise color control requires custom profiles. When you use custom profiles to tag an image, ColorSync can do a better job of translating color information from the image to other color spaces or devices.

It's easy to change the profile that Image Capture embeds in downloaded images:

1. If you haven't done so already, install your preferred profile in /Library/ColorSync/Profiles.
2. Connect your supported camera(s) and/or scanner(s).
3. Open the Image Capture application (/Applications/Image Capture).
4. In the window that appears, click the Options button.



5. Click the Download Options button.
6. Select your profile from the Profile pop-up menu.



## Managing Untagged Images

At times, you might need to work with an untagged image—one that does not have an embedded source profile.

Untagged images can include:

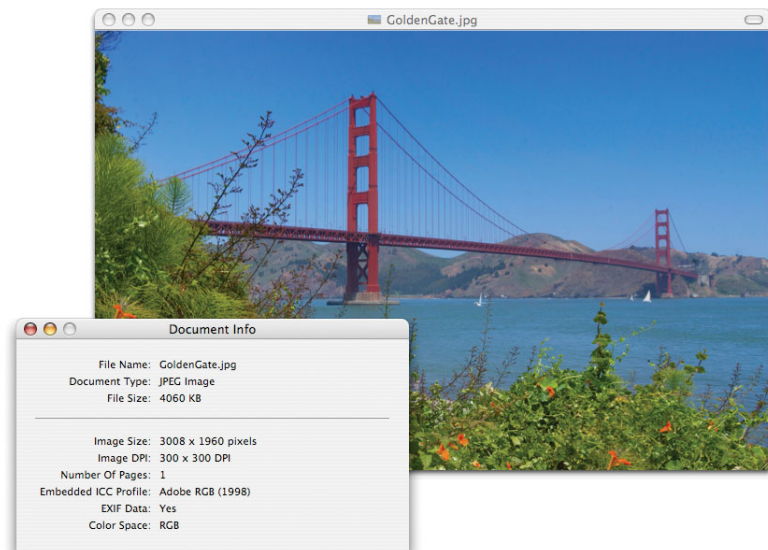
- Stock photography (TIFF or JPEG files)
- An image emailed to you from Windows or Mac OS 9
- Legacy artwork
- An image from the web

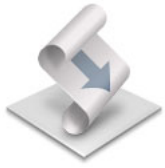
When you receive an untagged image, it is important that you provide the tagging information right away. Quartz—the two-dimensional drawing engine built into Mac OS X that creates images onscreen—requires a starting point for matching each image’s color to your display. If an image does not have an embedded profile as a starting point, Quartz uses a generic profile, which might not be accurate enough for your workflow. While Panther offers the benefit of automatically color-managing images, your color work will be more accurate if you embed custom input (source) profiles into your images.

The point is to tag early and tag everything. It is always better to work with tagged images than untagged images.

To check whether an image is tagged or untagged, use the Preview application located in your Applications folder.

1. Open the image in Preview and select the Get Info command from the Tools menu.
2. Check the Embedded ICC Profile field in the Document Info window.



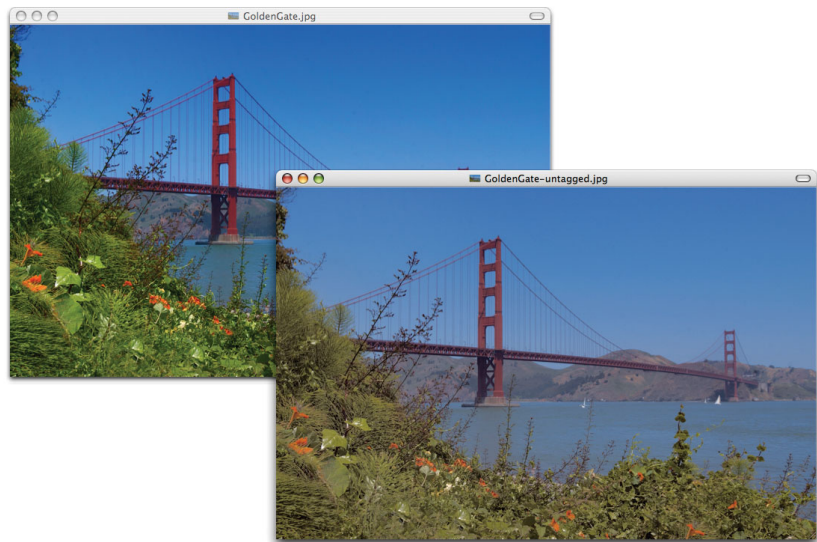


Embed chosen profile

If you want to embed a specific color profile and tag your images automatically, AppleScript is another alternative. AppleScript is an English-like scripting language used to write files that automate the actions of your computer and the applications that run on it.

1. Navigate to `/Library/Scripts/ColorSync`.
2. Double-click the “Embed chosen profile” script.
3. Click OK.
4. Navigate to the image on your hard drive and select it.
5. Navigate to your preferred source profile and select it.

On the right is an untagged image that Quartz has matched to a display using a generic profile. On the left is an image displayed with an appropriate custom profile. Quartz and ColorSync can work much more accurately using custom profiles, allowing you to work with more precise color.



## Converting to a Working Space

Now that you or Image Capture have tagged captured images with an appropriate generic or custom profile, you might need to convert your images to a *working space*—an ICC profile not associated with a particular device. Using a working space allows you to work with greater color accuracy. Because devices interpret color in a nonuniform way, they can be unpredictable in how they translate your instructions for changing color in an image. Working spaces allow you to work in a device-neutral (uniform) environment that increases your control over color.

For editing color, it's best to select a working space with a gamut that overreaches or matches the gamut of the capture (input) device. If you do this, the color from the original image will translate into the new space while maintaining as much of the original color as possible. Two of the most popular working spaces are Adobe RGB (1998), one of the best built-in spaces for print work, and sRGB, often used for web work and work in Microsoft Windows.

You can write a simple automation routine in AppleScript to convert the device profile that Image Capture embeds in your images to your preferred working space. Here is a sample script to get you started.

1. Open the Script Editor application (/Applications/AppleScript/Script Editor).

2. Type the following in the script window:

```
on open these_items
    tell application "ColorSyncScripting"
        launch
        set destination_profile to profile "Generic Gray Profile"
        repeat with i from 1 to the count of these_items
            set this_item to item i of these_items
            match this_item to destination destination_profile
        end repeat
    end tell
end open
```

3. Click the Compile button to make sure there are no typographical errors.

4. Replace the text "Generic Gray Profile" with your chosen working space profile—for example, "Adobe RGB (1998)". The name inside the quotes must be the internal name (that is, the description tag) of the installed profile. You can use the "Show profile info" script to get this information. The script will show the "desc" (description). Use this name in your script.

5. Save the script as an application (uncheck all options) to your hard drive.

You can also add error handling, file type checking, rendering intent setting, and other options to your AppleScript script. See the AppleScript website or the ColorSyncScripting dictionary (using Script Editor) for more information.

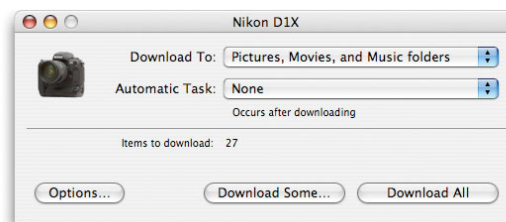
You can now select the script as the Automatic Task in Image Capture:

1. If you haven't already, install your working space profile in /Library/ColorSync/Profiles.

2. Connect your supported camera(s) and/or scanner(s).

3. Open the Image Capture application (/Applications/Image Capture).

4. Click the Automatic Task pop-up menu and select the script you saved earlier.



Now, when images are downloaded from your camera or scanned in, Image Capture embeds the profile chosen earlier (see page 8), writes the file(s) to disk, and then triggers the Automatic Task to convert the color in each image to your designated working space. Automatically, when an image lands on your hard drive, it is already in your preferred working space and you can begin editing right away.

Note that you can also use Adobe Photoshop to convert your camera or other source profile to your preferred working space.

# Color Workflow: The Edit Phase

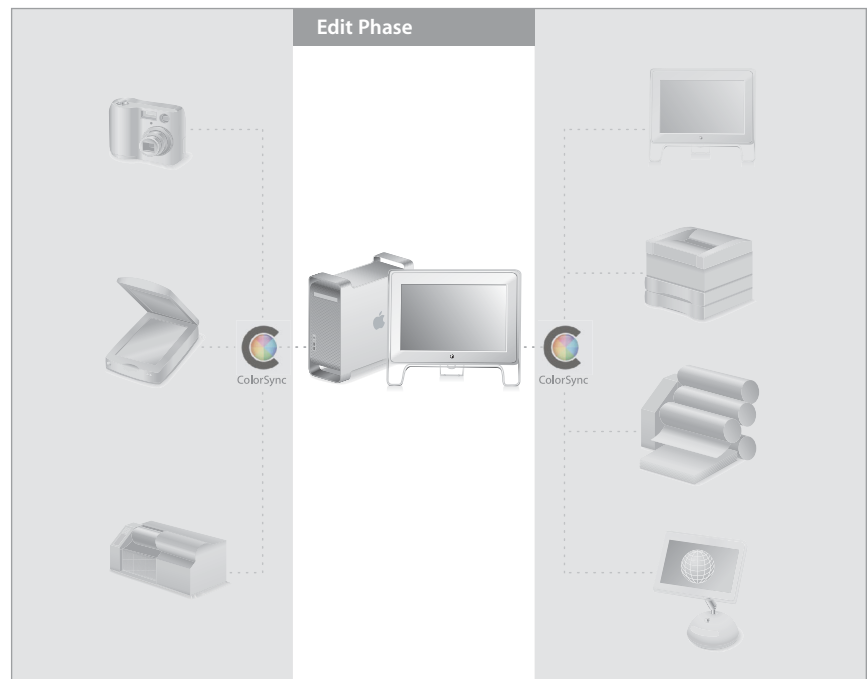
## Calibration products

For maximum accuracy in calibrating and profiling your display or output device, you can use a hardware calibration device such as a *colorimeter* or a *spectrophotometer*. Colorimeters are most often used for calibrating displays. Spectrophotometers are used to calibrate and profile displays, and they are also useful for creating profiles for output devices such as printers.

For more information on measurement devices, visit the Macintosh Products Guide at [www.apple.com/guide](http://www.apple.com/guide).

Once you have captured your images, tagged them with an appropriate device profile, and converted them to a working space, you can move into the edit phase. Powerful tools and technologies built into Mac OS X Panther can assist you with a number of important color management activities during this phase. You can:

- Calibrate and profile your display.
- Soft proof your images.
- Share your soft proofs with remote clients or colleagues.



## Calibrating and Profiling Your Display

Your display is the window into everything you do. It plays a central role in all your color work. By calibrating your display and using a custom profile, you can trust the color you see on your display and view and modify color in your images more accurately.

When you connect a display, your Macintosh queries it for industry-standard information. Based on this data, ColorSync creates and assigns a factory display profile. This feature means that every Mac running Panther can display color accurately without any user effort.

A factory profile is a good start, but for even better color results, consider calibrating and profiling your particular display.

- A calibration sequence makes sure the display is behaving consistently before profiling. The display is told to produce a series of colors in sequence. Each color is measured to compare the requested color with the actual color displayed.
- Once your display is calibrated, you can create a custom ICC profile for it.

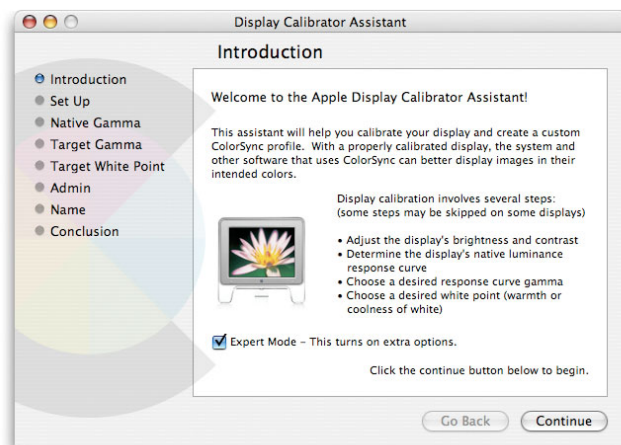
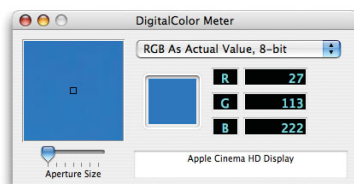
You can accomplish both of these steps using the Display Calibrator Assistant built into Panther. Enhancements to the new Display Calibrator allow you to adjust your display with more control, resulting in a better display profile.

### Using the Display Calibrator Assistant

1. Go to System Preferences and click Displays.
2. Click the Color button.
3. Click the Calibrate button to view the Display Calibrator Assistant screen.
4. Check the Expert Mode box.
5. Click Continue.

### Using the DigitalColor Meter utility

The DigitalColor Meter utility (/Applications/Utilities) lets you view the exact numeric RGB values for colors on your display. You can use this feature to match a color on your screen to various industry color standards or to match colors in a page layout. For example, if you are creating a catalog layout and you want to match a dominant color in a photo to some styled type, you can use the DigitalColor Meter utility to determine the exact color, re-create it as a "spot color," and apply it to type or other design elements in your layout.



The onscreen directions walk you through the calibration and profiling process. At the end, you can name and save a custom profile for your display.

Because ambient conditions and the color on your display can change, it is a good idea to calibrate and profile your display about once a month.

Using software-based profiling tools will yield more accurate results than using generic factory profiles. For the ultimate in color accuracy, consider investing in hardware-assisted profiling or in a profiling service. See the "Resources" section for more information.

## Editing Images

Once you know you can trust what you see on your display, you can adjust the color in your images. Choose an application that is ICC aware, such as Adobe Photoshop.

By using an ICC-aware application, you can ensure that the color information in your image will be appropriately managed as you make changes or move the image into the output phase of the color workflow.

## Soft Proofing

Based on the Portable Document Format (PDF) 1.4 standard, Quartz is the native Mac OS X 2D drawing engine that generates text, vector, and raster images onscreen. Applications that use Quartz automatically support ColorSync. These applications include Preview, Mail, and Safari—all of which come with Panther. This feature has major implications for the color workflow, especially for soft proofing.

In Panther, Quartz has been extended with new functionality called Quartz Filters. These filters let you manage color, create special color effects, compress images, and produce PDF/X-3 files. They leverage the power of Quartz to control, preview, and alter images and PDF documents. You can use Quartz Filters in ColorSync Utility to soft proof files onscreen, or create hard-copy proofs from almost any application by applying Quartz Filters from the Print dialog.

With Quartz Filters, you and your clients can view a proof of the image on the fly—even if your clients don't have an application such as Photoshop installed. When clients open a tagged image in a built-in Mac OS X application such as Preview, Mail, or Safari, ColorSync automatically matches the image to their displays. If you have tagged the image with the profile for the printer, then they are viewing a soft proof of the final output. It's like having a virtual press printout, right on the screen. The ability to share proofs electronically can dramatically reduce the time and cost of color proofing cycles.

Instead of printing the image multiple times, you can “overlay” Quartz Filters onto images to enable accurate, onscreen proofing. Here's how you can use a Quartz Filter to soft proof your files.

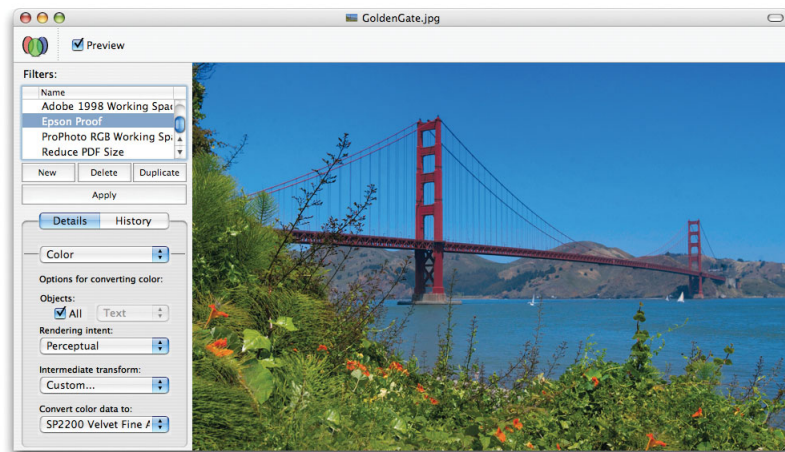
1. Open ColorSync Utility (/Applications/Utilities/ColorSync Utility).
2. Click the Filters icon in the toolbar.
3. Click the “View file with Filter” button at the bottom of the window.
4. In the Open dialog, choose the file you want to proof.
5. Click the New button below the list of filters.
6. Double-click Untitled and name the new filter.
7. Under Details, click the pop-up menu and choose Color.
8. Under Objects, leave the All checkbox checked.
9. Click the “Convert color data to” pop-up menu and select the device profile of the device you are proofing (for example, a printing press profile, which you would have installed earlier).
10. Click the Preview checkbox in the toolbar.

### About rendering intent

The rendering intent indicates what ColorSync should do when translating color information from the source gamut to the destination gamut. While color is highly subjective, here are a few tips to get you started:

- For the most beautiful, rich color, select Perceptual.
- If you're sending the image to a proofing device, start with Absolute (Colorimetric).
- For punchy presentation graphics, try Saturation.
- If your goal is to maintain precise color—in a logo, for example—use Relative (Colorimetric).





There is no need to click the Apply button unless you want to convert the color in your document to the profile chosen for soft proofing. If you click Apply, you will alter your original file, so you might want to choose Save As from the File menu and save a copy of the document, rather than overwriting your original file.

## Sharing Soft Proofs

To share a soft proof with anyone else using Mac OS X v10.3, you have a number of options:

- Post a tagged image on a website and ask your reviewer to look at it with Safari.
- Email a single-page tagged image and have your reviewer open it in Mail, which displays single-page images directly.
- Send a multipage, tagged image as a PDF file and instruct your reviewer to open it in Preview.

With Quartz and Quartz Filters, feedback and sign-off are now orders of magnitude easier and less expensive for everyone.

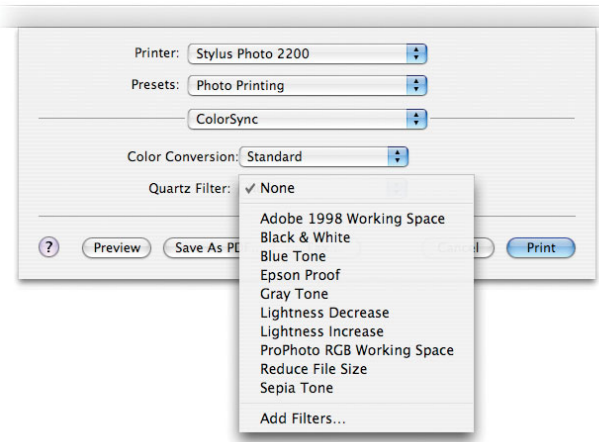
## Creating Hard-Copy Proofs

After proofing onscreen, you can convert your soft proof to a print-ready proof and output it on an inexpensive desktop printer. This capability allows you to produce the equivalent of a commercial-quality contract proof, right from your desktop. And, if you've acquired a profile from your commercial printer, you can rest assured that the proof you create will closely match the final printed output.

You can generate a hard-copy proof in two ways. You can use an ICC-aware application such as Adobe Photoshop or you can go through the Print dialog to apply the Quartz Filter you used for soft proofing to create a hard-copy file. Here's how:

1. In your application, let's say Preview, select Print (File > Print).
2. Click the pop-up menu labeled "Copies & Pages" and select ColorSync.
3. Click the Quartz Filter pop-up menu and choose the filter you used for soft proofing.
4. Click the Print button.

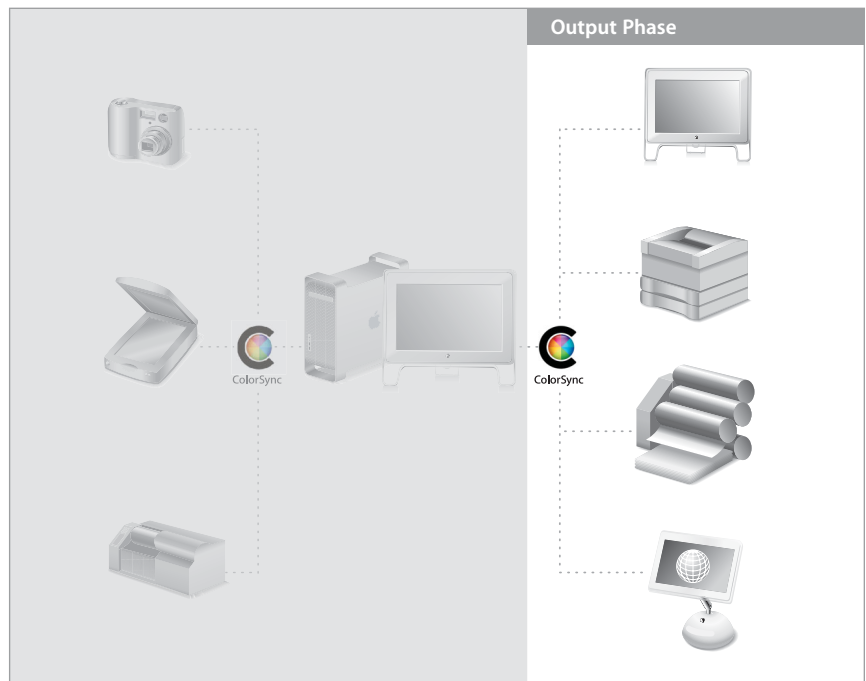
When the application sends your document to the printing system, your system will match the color in the document first to the profile selected in the Quartz Filter and then to the profile for your printer.



# Color Workflow: The Output Phase

The output phase of the color workflow is most often associated with printing. The full integration of color management into Mac OS X Panther allows you to make fewer iterations on paper to achieve the results you want. In particular, you can:

- Preview your color results before printing.
- Take advantage of faster PostScript printing.
- Manage a raster printer.
- Create PDF/X files for professional printing.



### Late binding vs. early binding

When ColorSync matches an image from a source profile to a destination profile, or when you apply a Quartz Filter, the actual data for the image is modified. Every time this happens, some information and accuracy is lost.

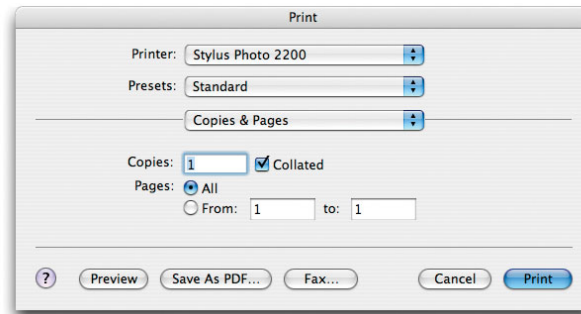
One way of handling this problem is called “late binding.” You manage the color workflow to stay in the RGB color space as long as possible, possibly even handing RGB files to the printer.

Another approach is called “early binding.” In this case you convert the data as soon as possible to the ultimate destination color space and keep it there through the workflow.

Choosing a late binding or early binding scenario depends on the factors in your particular circumstance. For example, passing RGB files to your printer might be an excellent choice if you know the printer can convert RGB to CMYK with satisfactory results. On the other hand, if you don’t know who will do the printing, you should convert your RGB data to CMYK in house before sending the files out.

## Checking Color Before You Print

When you select Print from the File menu, the Print dialog includes a Preview button.



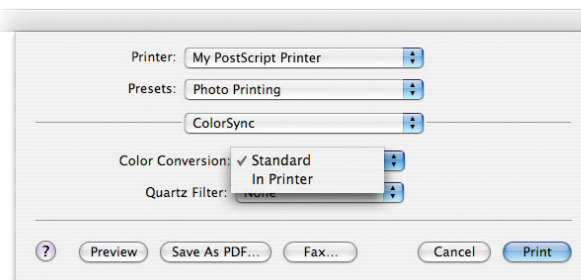
Clicking this button opens your print job in Preview. If the driver for your printer is ColorSync aware, you will see an accurate soft proof of your hard-copy output onscreen. The soft proof uses the current profile for your printer as displayed in ColorSync Utility. See page 7 for more information about obtaining color profiles.

The color-managed soft proof you see reflects every option that you have set in the Print pane. This feature in Mac OS X v10.3 is a major advancement for creative professionals, and there’s nothing that touches it in any other operating system.

## Faster Printing on a PostScript Printer

In Mac OS X v10.3, printing to a PostScript printer is significantly faster and more accurate. Traditionally, the output device handled the job of matching source image data to the printer profile. But with Panther, your Mac can accomplish this task, matching color and converting the file before it goes to the output device. You harness the extreme processing power of your Mac. And ColorSync is optimized for the dual processor Power Mac G5 and can tap both processors, resulting in a boost in throughput.

When you print to a PostScript printer from an application that uses Quartz, the Print dialog includes additional options under ColorSync.



The Color Conversion pop-up menu gives you two choices:

- **Standard.** Using this default setting, ColorSync converts the profile data before sending it to the printer. This option is generally faster and more accurate.
- **In Printer.** Using this option, ColorSync converts the source data to a device-independent color space before the print job is sent to the printer. This device-independent space is then matched to the printer’s color space by the printer’s PostScript interpreter. This option should be used only when printing to high-end PostScript printers that provide their own built-in color management options.

## Printing to a Raster Printer

A raster printer is a non-PostScript printer such as an inkjet printer. There are two ways to print color-managed files to a raster printer:

- Use Photoshop to prematch your source data to a printer profile. Choose “Print with Preview” in Photoshop and then choose the printer profile. Turn off any color correction in the printer driver and print.
- If you are printing from an application such as Preview that does not provide pre-matching, ColorSync will match your source data to a printer profile. First, you’ll need to assign a profile to your printer in ColorSync Utility (see instructions on page 7).

## PDF/X Support

PDF/X is an emerging industry standard for sending documents for professional printing. PDF/X protects data from inadvertent modification during the printing process. To create a PDF/X filter, use ColorSync Utility.

Panther supports the PDF/X-3 format, which is a more flexible version of the popular PDF/X format. PDF/X-3 files can include RGB data or CMYK and spot color data, and can therefore accommodate both late binding and early binding scenarios. (See the sidebar on page 20.)

# Automating the Workflow

The Macintosh platform provides a number of technologies and features that let you automate routine color management tasks, freeing up your time for the creative work and decision-making that can never be automated.

## About AppleScript

AppleScript is the core automation technology built into Mac OS X, and it lets you automate a wide variety of tasks on your Mac, including color management. An application or a technology that you can control from AppleScript is said to be *scriptable*.

ColorSync itself is scriptable. Also, new in Panther, aspects of Quartz are scriptable. Not only can you automate color management operations, you can also automate image-manipulation operations such as cropping, scaling, rotating, padding, or converting a file type.

Using these powerful capabilities, a sample automation scenario might be:

1. Connect a camera to the computer and automatically capture JPEG images from the camera.
2. Tag images with an appropriate device profile.
3. Convert them to a selected working space.
4. Save them as TIFF files for editing.

For more information about AppleScript, visit [www.apple.com/applescript](http://www.apple.com/applescript).

## An Automation Starter Kit

One way to get started using AppleScript to automate color management is to use the ColorSync scripts provided in `/Library/Scripts/ColorSync`. These scripts perform operations such as showing you an image's profile information, embedding a profile in an image, removing a profile from an image, or displaying information about an embedded profile. (See the sidebar.)

These scripts are saved as droplets (self-starting applications). Simply drag an image or a profile onto a script's icon and the script will execute. You can also double-click a script to run it.

You can modify and extend these scripts to meet your own needs using Script Editor.

### Scripts in `/Library/Scripts/ColorSync`

- Build profile info web page
- Change display profile
- Embed chosen profile
- Embed display profile
- Embed specific profile
- Extract profile
- Match to chosen profiles
- Match to CMYK
- Match to specific profiles
- Mimic PC monitor
- PC to Mac Gamma
- Proof CMYK on display
- Proof to chosen profiles
- Proof to specific profiles
- Remove profile from image
- Rename profile
- Set profile info
- Show profile info

## Running Scripts

Here are some other ways you can run a color management script:

- In Image Capture, choose the script from the Automated Task pop-up menu.
- Attach the script to a folder using Folder Actions. When something related to the folder changes—such as putting an image into the folder—the script is triggered. For more information about Folder Actions, open Script Editor in `/Applications/AppleScript` and select Script Editor Help from the Help menu. Then search for Folder Actions.
- Place the script in a PDF Services folder in `/Library`. For more information about the PDF Services folder, open Mac Help from the Help menu on the desktop and search for PDF Workflow.

# Resources

To learn more about the topics mentioned in this tour, please consult these resources.

## Websites

- ColorSync: [www.apple.com/colorysync](http://www.apple.com/colorysync)
- Mac OS X: [www.apple.com/macosx](http://www.apple.com/macosx)
- Apple displays: [www.apple.com/displays](http://www.apple.com/displays)
- AppleScript: [www.apple.com/applescript](http://www.apple.com/applescript)
- Macintosh Products Guide: [www.apple.com/guide](http://www.apple.com/guide)
- Color Consistency and Adobe Creative Suite (PDF):  
[www.adobe.com/products/creativesuite/pdfs/cscolormgmt.pdf](http://www.adobe.com/products/creativesuite/pdfs/cscolormgmt.pdf)
- Adobe profiles: [www.adobe.com/support/downloads](http://www.adobe.com/support/downloads)
- International Color Consortium (ICC): [www.color.org](http://www.color.org)

## Profiling Services

- [www.chromix.com](http://www.chromix.com)
- [www.colormanagement.com](http://www.colormanagement.com)

## Books

- *Real World Color Management*, by Bruce Fraser, Chris Murphy, and Fred Bunting
- *Real World Adobe Photoshop CS*, by David Blatner and Bruce Fraser
- *Mastering Digital Printing: The Photographer's and Artist's Guide to High-Quality Digital Output*, by Harald Johnson
- *Photoshop Color Correction*, by Michael Kieran
- *Adobe Photoshop CS for Photographers*, by Martin Evening
- *Adobe Photoshop Master Class*, by John Paul Caponigro
- *Color Management in Mac OS X, A Practical Approach*, by Joshua Weisberg